

DESCRIPTION

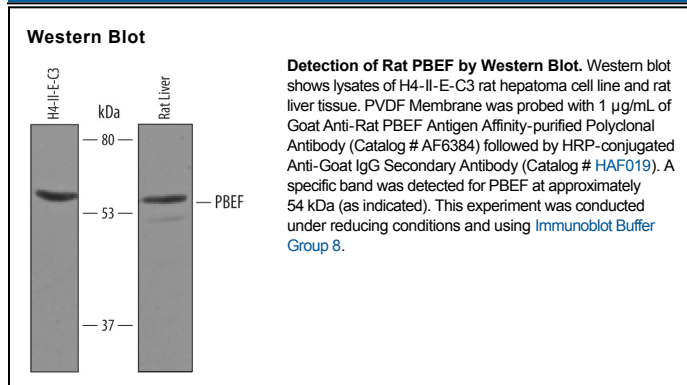
Species Reactivity	Rat
Specificity	Detects rat PBEF/Visfatin in direct ELISAs and Western blots. In direct ELISAs, approximately 25% cross-reactivity with recombinant mouse PBEF and recombinant human PBEF is observed.
Source	Polyclonal Goat IgG
Purification	Antigen Affinity-purified
Immunogen	<i>S. frugiperda</i> insect ovarian cell line Sf 21 derived recombinant rat PBEF/Visfatin Gln25-His491 Accession # Q80Z29
Formulation	Lyophilized from a 0.2 µm filtered solution in PBS with Trehalose. See Certificate of Analysis for details. *Small pack size (-SP) is supplied as a 0.2 µm filtered solution in PBS.

APPLICATIONS

Please Note: Optimal dilutions should be determined by each laboratory for each application. *General Protocols* are available in the *Technical Information* section on our website.

	Recommended Concentration	Sample
Western Blot	1 µg/mL	See Below

DATA



PREPARATION AND STORAGE

Reconstitution	Reconstitute at 0.2 mg/mL in sterile PBS.
Shipping	The product is shipped at ambient temperature. Upon receipt, store it immediately at the temperature recommended below. *Small pack size (-SP) is shipped with polar packs. Upon receipt, store it immediately at -20 to -70 °C
Stability & Storage	Use a manual defrost freezer and avoid repeated freeze-thaw cycles. <ul style="list-style-type: none"> ● 12 months from date of receipt, -20 to -70 °C as supplied. ● 1 month, 2 to 8 °C under sterile conditions after reconstitution. ● 6 months, -20 to -70 °C under sterile conditions after reconstitution.

BACKGROUND

PBEF (pre-B cell colony-enhancing factor; also visfatin and nicotinamide phosphoribosyltransferase/Nampt) is a 52-54 kDa member of the NAPRTase family of molecules. It is a dimer that is found both intracellularly and extracellularly, where it participates in NAD synthesis and induces proinflammatory cytokine synthesis, respectively. PBEF has also been reported to show insulin-like effects on adipocytes by binding to the insulin receptor. Cells known to express PBEF include visceral adipocytes, neutrophils, and capillary endothelium. Rat PBEF is 491 amino acids in length. It contains no signal sequence but is secreted. Potential phosphorylation sites exist at Tyr34, Tyr188 and Ser398. Full-length (aa 1-491) rat PBEF shares 99% and 95% aa identity with mouse and human PBEF, respectively.