

#### DESCRIPTION

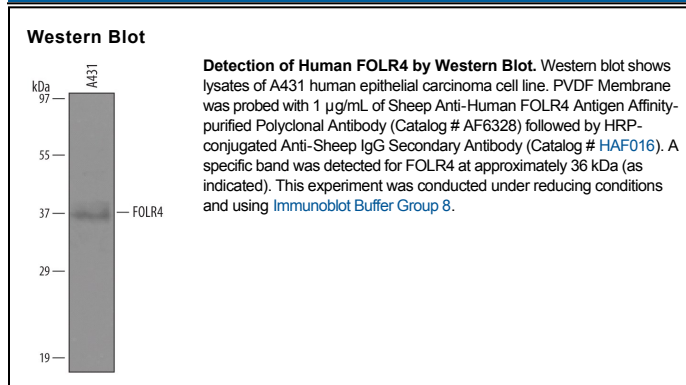
<b>Species Reactivity</b>	Human
<b>Specificity</b>	Detects human FOLR4 in direct ELISAs and Western blots. In direct ELISAs, less than 5% cross-reactivity with recombinant human (rh) FOLR1, rhFOLR2, and rhFOLR3 is observed.
<b>Source</b>	Polyclonal Sheep IgG
<b>Purification</b>	Antigen Affinity-purified
<b>Immunogen</b>	<i>E. coli</i> -derived recombinant human FOLR4 Glu134-Asn210 Accession # NP_001073955
<b>Formulation</b>	Lyophilized from a 0.2 µm filtered solution in PBS with Trehalose. See Certificate of Analysis for details. *Small pack size (-SP) is supplied as a 0.2 µm filtered solution in PBS.

#### APPLICATIONS

**Please Note:** Optimal dilutions should be determined by each laboratory for each application. *General Protocols* are available in the *Technical Information* section on our website.

	<b>Recommended Concentration</b>	<b>Sample</b>
<b>Western Blot</b>	1 µg/mL	See Below

#### DATA



#### PREPARATION AND STORAGE

<b>Reconstitution</b>	Reconstitute at 0.2 mg/mL in sterile PBS.
<b>Shipping</b>	The product is shipped at ambient temperature. Upon receipt, store it immediately at the temperature recommended below. *Small pack size (-SP) is shipped with polar packs. Upon receipt, store it immediately at -20 to -70 °C
<b>Stability &amp; Storage</b>	<b>Use a manual defrost freezer and avoid repeated freeze-thaw cycles.</b> <ul style="list-style-type: none"> <li>● 12 months from date of receipt, -20 to -70 °C as supplied.</li> <li>● 1 month, 2 to 8 °C under sterile conditions after reconstitution.</li> <li>● 6 months, -20 to -70 °C under sterile conditions after reconstitution.</li> </ul>

#### BACKGROUND

FOLR4 (Folate receptor 4; also FR4 and folate receptor  $\delta$  and folate binding protein 3) is a 34-36 kDa member of the folate receptor family of molecules. Based on mouse, it appears to be a marker for subsets of T cells. In particular, and in conjunction with CD25, FR4<sup>hi</sup>CD25<sup>hi</sup> expression defines T reg cells, FR4<sup>lo</sup>CD25<sup>+</sup> expression pattern identifies effector memory T cells, and a FR4<sup>hi</sup>CD25<sup>-</sup> combination characterizes central memory T cells. Mature human FOLR4 is 225 amino acids (aa) in length (aa 20-244). It contains virtually no identifiable motifs. There is one potential splice variant that shows a five aa substitution for aa 111-116. Over aa 134-220, human FOLR4 shares 72% aa identity with mouse FOLR4.