

DESCRIPTION

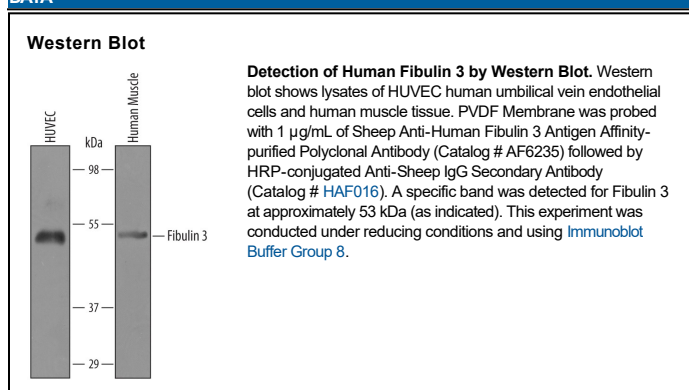
Species Reactivity	Human
Specificity	Detects human Fibulin 3 in direct ELISAs and Western blots.
Source	Polyclonal Sheep IgG
Purification	Antigen Affinity-purified
Immunogen	Chinese hamster ovary cell line CHO-derived recombinant human Fibulin 3 Gln19-Phe493 Accession # Q12805
Formulation	Lyophilized from a 0.2 µm filtered solution in PBS with Trehalose. See Certificate of Analysis for details. *Small pack size (-SP) is supplied either lyophilized or as a 0.2 µm filtered solution in PBS.

APPLICATIONS

Please Note: Optimal dilutions should be determined by each laboratory for each application. [General Protocols](#) are available in the Technical Information section on our website.

	Recommended Concentration	Sample
Western Blot	1 µg/mL	See Below

DATA



PREPARATION AND STORAGE

Reconstitution	Reconstitute at 0.2 mg/mL in sterile PBS.
Shipping	The product is shipped at ambient temperature. Upon receipt, store it immediately at the temperature recommended below. *Small pack size (-SP) is shipped with polar packs. Upon receipt, store it immediately at -20 to -70 °C
Stability & Storage	Use a manual defrost freezer and avoid repeated freeze-thaw cycles. <ul style="list-style-type: none"> 12 months from date of receipt, -20 to -70 °C as supplied. 1 month, 2 to 8 °C under sterile conditions after reconstitution. 6 months, -20 to -70 °C under sterile conditions after reconstitution.

BACKGROUND

Fibulin 3 (also S1-5 and EFEMP1) is a secreted, monomeric 55-57 kDa member of the fibulin family of proteins. In mouse, Fibulin 3 appears in an O-glycosylated 63 and 80 kDa form. Given the high amino acid (aa) conservation between mouse and human, human Fibulin 3 may also demonstrate like isoforms. Fibulin 3 is expressed by fibroblasts, endothelial cells and prechondrocytes, and appears to provide both stability to ECM (elastin and basement membrane), and to regulate cell maturation/ differentiation. Fibulin 3 is reported to activate the EGF receptor, an effect that may influence multiple cell types under multiple scenarios. Mature human Fibulin 3 is 476 aa in length. It contains six EGF-like domains (aa 26-378), at least one of which binds to the EGF receptor and induces EGFR phosphorylation. There is at least one alternative start site at Met107 that generates a 43 kDa short form. Full-length human Fibulin 3 shares 95% aa identity with mouse Fibulin 3.