

**DESCRIPTION**

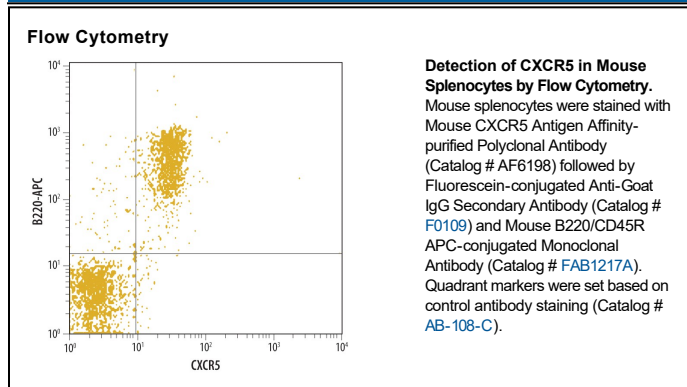
<b>Species Reactivity</b>	Mouse
<b>Specificity</b>	Detects mouse CXCR5 in direct ELISAs. In direct ELISAs, less than 1% cross-reactivity with recombinant mouse CXCR7 is observed.
<b>Source</b>	Polyclonal Goat IgG
<b>Purification</b>	Antigen Affinity-purified
<b>Immunogen</b>	<i>E. coli</i> -derived recombinant mouse CXCR5 Met1-Pro57, Glu112-Thr126, Lys191-Phe221, and Leu283-Ile306, joined by linker peptides Accession # Q04683
<b>Formulation</b>	Lyophilized from a 0.2 µm filtered solution in PBS with Trehalose. See Certificate of Analysis for details. *Small pack size (-SP) is supplied either lyophilized or as a 0.2 µm filtered solution in PBS.

**APPLICATIONS**

**Please Note:** Optimal dilutions should be determined by each laboratory for each application. *General Protocols* are available in the *Technical Information* section on our website.

	<b>Recommended Concentration</b>	<b>Sample</b>
<b>Flow Cytometry</b>	2.5 µg/10 <sup>6</sup> cells	See Below
<b>CyTOF-ready</b>	Ready to be labeled using established conjugation methods. No BSA or other carrier proteins that could interfere with conjugation.	

**DATA**



**PREPARATION AND STORAGE**

<b>Reconstitution</b>	Reconstitute at 0.2 mg/mL in sterile PBS.
<b>Shipping</b>	The product is shipped at ambient temperature. Upon receipt, store it immediately at the temperature recommended below. *Small pack size (-SP) is shipped with polar packs. Upon receipt, store it immediately at -20 to -70 °C
<b>Stability &amp; Storage</b>	<b>Use a manual defrost freezer and avoid repeated freeze-thaw cycles.</b> <ul style="list-style-type: none"> <li>● 12 months from date of receipt, -20 to -70 °C as supplied.</li> <li>● 1 month, 2 to 8 °C under sterile conditions after reconstitution.</li> <li>● 6 months, -20 to -70 °C under sterile conditions after reconstitution.</li> </ul>

**BACKGROUND**

CXCR5 (CXC chemokine receptor 5; also BLR-1, NLR and CD185) is a 55-60 kDa member of the G-protein coupled receptor 1 family. It is expressed on select cell types, including granule and Purkinje cell neurons, embryonic CD4+ CD3- IL-7Rα+ precursor cells, B cells and follicular T helper cells. CXCR5 selectively binds BLC/CXCL13. This appears to both promote embryonic lymph node development and, in the adult, direct expressing cells to positions that optimize antigen presentation and antibody production. Mouse CXCR5 is a 7-transmembrane glycoprotein that is 374 amino acids (aa) in length. It contains a 57 aa N-terminal extracellular region plus a 47 aa C-terminal cytoplasmic domain. Over aa 1-57, mouse CXCR5 shares 84% and 47% aa identity with rat and human CXCR5, respectively.