

**DESCRIPTION**

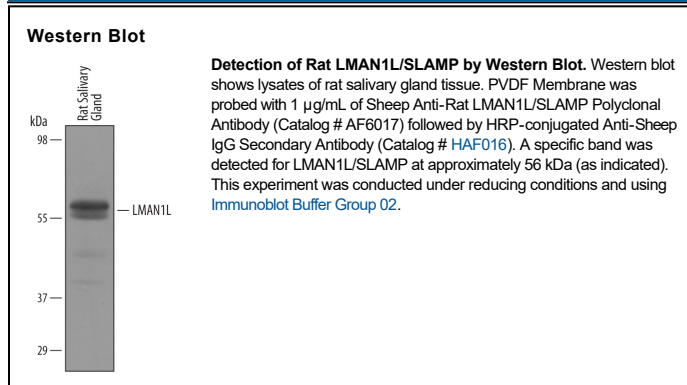
<b>Species Reactivity</b>	Rat
<b>Specificity</b>	Detects rat LMAN1L/SLAMP in direct ELISAs and Western blots.
<b>Source</b>	Polyclonal Sheep IgG
<b>Purification</b>	Antigen Affinity-purified
<b>Immunogen</b>	<i>E. coli</i> -derived recombinant rat LMAN1L/SLAMP Arg33-Thr436 Accession # Q5FB95
<b>Formulation</b>	Lyophilized from a 0.2 µm filtered solution in PBS with Trehalose. See Certificate of Analysis for details. *Small pack size (-SP) is supplied either lyophilized or as a 0.2 µm filtered solution in PBS.

**APPLICATIONS**

**Please Note:** Optimal dilutions should be determined by each laboratory for each application. *General Protocols* are available in the *Technical Information* section on our website.

	<b>Recommended Concentration</b>	<b>Sample</b>
<b>Western Blot</b>	1 µg/mL	See Below

**DATA**



**PREPARATION AND STORAGE**

<b>Reconstitution</b>	Reconstitute at 0.2 mg/mL in sterile PBS.
<b>Shipping</b>	The product is shipped at ambient temperature. Upon receipt, store it immediately at the temperature recommended below. *Small pack size (-SP) is shipped with polar packs. Upon receipt, store it immediately at -20 to -70 °C
<b>Stability &amp; Storage</b>	<b>Use a manual defrost freezer and avoid repeated freeze-thaw cycles.</b> <ul style="list-style-type: none"> <li>• 12 months from date of receipt, -20 to -70 °C as supplied.</li> <li>• 1 month, 2 to 8 °C under sterile conditions after reconstitution.</li> <li>• 6 months, -20 to -70 °C under sterile conditions after reconstitution.</li> </ul>

**BACKGROUND**

SLAMP (Sublingual acinar membrane protein; also LMAN1L) is a 50-60 kDa protein that likely is a member of the animal L-type lectin family of proteins. It is expressed exclusively by mucous secreting cells in the ER-Golgi compartment. SLAMP likely plays a role in the intracellular trafficking of glycoproteins, possibly by binding mannose residues. Mature rat SLAMP is a 475 amino acid (aa) type I transmembrane protein that contains a 409 aa extracellular region (aa 29-437) and a 43 aa cytoplasmic domain (aa 461-503). Over aa 33-436, rat SLAMP shares 89% aa identity with mouse SLAMP.