

DESCRIPTION

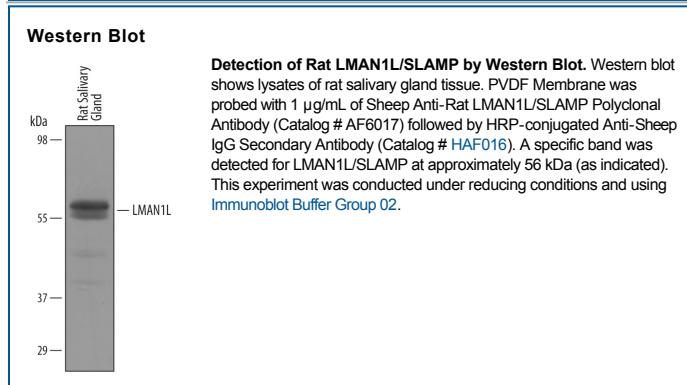
| | |
|---------------------------|-----------------------------------------------------------------------------------------------------------------------------------------------------------------------------------------|
| Species Reactivity | Rat |
| Specificity | Detects rat LMAN1L/SLAMP in direct ELISAs and Western blots. |
| Source | Polyclonal Sheep IgG |
| Purification | Antigen Affinity-purified |
| Immunogen | <i>E. coli</i> -derived recombinant rat LMAN1L/SLAMP Arg33-Thr436 Accession # Q5FB95 |
| Formulation | Lyophilized from a 0.2 µm filtered solution in PBS with Trehalose. See Certificate of Analysis for details. *Small pack size (-SP) is supplied as a 0.2 µm filtered solution in PBS. |

APPLICATIONS

Please Note: Optimal dilutions should be determined by each laboratory for each application. *General Protocols* are available in the *Technical Information* section on our website.

| | Recommended Concentration | Sample |
|---------------------|----------------------------------|---------------|
| Western Blot | 1 µg/mL | See Below |

DATA



PREPARATION AND STORAGE

| | |
|--------------------------------|----------------------------------------------------------------------------------------------------------------------------------------------------------------------------------------------------------------------------------------------------------------------------------------------------------------------------------------------------------|
| Reconstitution | Reconstitute at 0.2 mg/mL in sterile PBS. |
| Shipping | The product is shipped at ambient temperature. Upon receipt, store it immediately at the temperature recommended below. *Small pack size (-SP) is shipped with polar packs. Upon receipt, store it immediately at -20 to -70 °C |
| Stability & Storage | Use a manual defrost freezer and avoid repeated freeze-thaw cycles. <ul style="list-style-type: none"> • 12 months from date of receipt, -20 to -70 °C as supplied. • 1 month, 2 to 8 °C under sterile conditions after reconstitution. • 6 months, -20 to -70 °C under sterile conditions after reconstitution. |

BACKGROUND

SLAMP (Sublingual acinar membrane protein; also LMAN1L) is a 50-60 kDa protein that likely is a member of the animal L-type lectin family of proteins. It is expressed exclusively by mucous secreting cells in the ER-Golgi compartment. SLAMP likely plays a role in the intracellular trafficking of glycoproteins, possibly by binding mannose residues. Mature rat SLAMP is a 475 amino acid (aa) type I transmembrane protein that contains a 409 aa extracellular region (aa 29-437) and a 43 aa cytoplasmic domain (aa 461-503). Over aa 33-436, rat SLAMP shares 89% aa identity with mouse SLAMP.