

DESCRIPTION

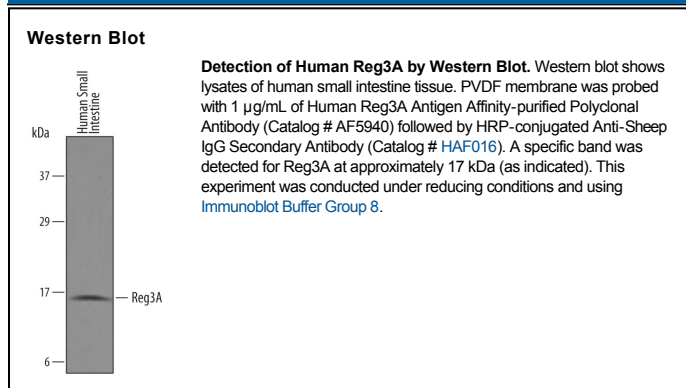
Species Reactivity	Human
Specificity	Detects human Reg3A in direct ELISAs and Western blots. In direct ELISAs, approximately 5% cross-reactivity with recombinant human (rh) Reg3G, recombinant mouse (rm) Reg3A, rmReg3B and recombinant rat Reg2 is observed and less than 2% cross-reactivity with rhReg1A, rhReg1B, rmReg1V, rmReg2 and rmReg3D.
Source	Polyclonal Sheep IgG
Purification	Antigen Affinity-purified
Immunogen	<i>E. coli</i> -derived recombinant human Reg3A Glu27-Asp175 Accession # Q06141
Formulation	Lyophilized from a 0.2 µm filtered solution in PBS with Trehalose. See Certificate of Analysis for details. *Small pack size (-SP) is supplied as a 0.2 µm filtered solution in PBS.

APPLICATIONS

Please Note: Optimal dilutions should be determined by each laboratory for each application. *General Protocols* are available in the *Technical Information* section on our website.

	Recommended Concentration	Sample
Western Blot	1 µg/mL	See Below

DATA



PREPARATION AND STORAGE

Reconstitution	Reconstitute at 0.2 mg/mL in sterile PBS.
Shipping	The product is shipped at ambient temperature. Upon receipt, store it immediately at the temperature recommended below. *Small pack size (-SP) is shipped with polar packs. Upon receipt, store it immediately at -20 to -70 °C
Stability & Storage	Use a manual defrost freezer and avoid repeated freeze-thaw cycles. <ul style="list-style-type: none"> • 12 months from date of receipt, -20 to -70 °C as supplied. • 1 month, 2 to 8 °C under sterile conditions after reconstitution. • 6 months, -20 to -70 °C under sterile conditions after reconstitution.

BACKGROUND

Reg3A (regenerating gene IIIa) is a secreted, 17 kDa, type III member of the Reg family, C-type lectin superfamily of proteins. It is expressed in intestine and exocrine pancreas, where it may have a protective effect against infection and TNF-α-induced stress. Mature mouse Reg3A is 149 amino acids (aa) in length (aa 27-175). It is essentially a soluble C-type lectin domain (aa 40-173). There are four type III genes (α-δ) in the mouse Reg family. Reg3A has less than 60% aa identity to β-δ. Mature mouse Reg3A is 87% and 61% aa identical to rat and human Reg3A, respectively.