

#### DESCRIPTION

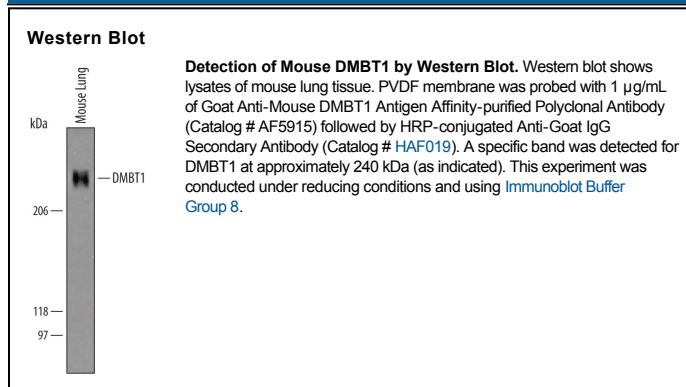
<b>Species Reactivity</b>	Mouse
<b>Specificity</b>	Detects mouse DMBT1 in direct ELISAs and Western blots.
<b>Source</b>	Polyclonal Goat IgG
<b>Purification</b>	Antigen Affinity-purified
<b>Immunogen</b>	<i>E. coli</i> -derived recombinant mouse DMBT1 Trp215-Gly420 Accession # Q60997
<b>Formulation</b>	Lyophilized from a 0.2 µm filtered solution in PBS with Trehalose. See Certificate of Analysis for details. *Small pack size (-SP) is supplied as a 0.2 µm filtered solution in PBS.

#### APPLICATIONS

**Please Note:** Optimal dilutions should be determined by each laboratory for each application. *General Protocols* are available in the *Technical Information* section on our website.

	<b>Recommended Concentration</b>	<b>Sample</b>
<b>Western Blot</b>	1 µg/mL	See Below

#### DATA



#### PREPARATION AND STORAGE

<b>Reconstitution</b>	Reconstitute at 0.2 mg/mL in sterile PBS.
<b>Shipping</b>	The product is shipped at ambient temperature. Upon receipt, store it immediately at the temperature recommended below. *Small pack size (-SP) is shipped with polar packs. Upon receipt, store it immediately at -20 to -70 °C
<b>Stability &amp; Storage</b>	<b>Use a manual defrost freezer and avoid repeated freeze-thaw cycles.</b> <ul style="list-style-type: none"> <li>● 12 months from date of receipt, -20 to -70 °C as supplied.</li> <li>● 1 month, 2 to 8 °C under sterile conditions after reconstitution.</li> <li>● 6 months, -20 to -70 °C under sterile conditions after reconstitution.</li> </ul>

#### BACKGROUND

DMBT1 (Deleted in malignant brain tumor-1; also MUCLIN, Hensin, CRP-Ductin, and gp300/350) is a 230-350 kDa member of the DMBT1 family of molecules. It is expressed by select cell types, including macrophages, intestinal epithelium, and pancreatic acinar cells. DMBT1 is both transmembrane (TM) and secreted, and possesses multiple activities that may be predicated on multimerization. It drives epithelial differentiation, binds Gm<sup>+</sup> and Gm<sup>-</sup> bacteria, and associates with cytoskeletal actin. Mouse DMBT1 is a type I TM glycoprotein 2085 amino acids (aa) in length. Its extracellular region contains eight SRCR repeats (aa 31-980, plus 1510-1610), five CUB domains (aa 1023-1490, plus 1633-1742), and a ZP segment (aa 1751-1999). Multiple splice variants exist. There are deletions of aa 584-733, 397-534, 593-731 and, 2032-2085 (within the TM segment), plus an insertion of 11 aa after Asp29. Over aa 215-420, mouse DMBT1 shares 75% aa identity with human DMBT1.