



Anti-human Pro-Corticoliberin Antibody

ORDERING INFORMATION

Catalog Number: AF5805

Lot Number: CCGJ01

Size: 100 µg

Formulation: 0.2 µm filtered solution in PBS with 5% trehalose

Storage: -20° C

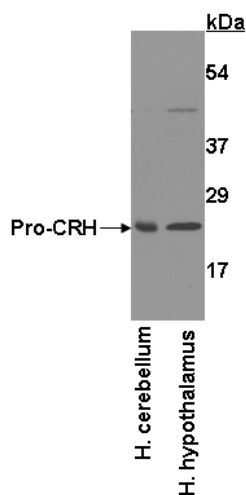
Reconstitution: sterile PBS

Specificity: human Pro-Corticoliberin

Immunogen: *E. coli*-derived rhPro-Corticoliberin

Ig Type: sheep IgG

Applications: Western blot
Direct ELISA



Detection of Pro-Corticoliberin with

AF5805. Tissue lysates were resolved by SDS-PAGE, transferred to an Immobilon-P membrane and immunoblotted with 1.0 µg/mL sheep anti-Pro-Corticoliberin.

Background

Pro-Corticoliberin (also Pro-CRF and Pro-CRH) is a predicted 19 kDa member of the CRF/Urotensin I family of hormones. It is expressed by placental syncytiotrophoblasts, zona fasciculata adrenal cells and paraventricular neurons, and is induced by glucocorticoids. Pro-Corticoliberin is the precursor to a mature, 41 amino acid (aa) amidated Corticoliberin that induces pituitary ACTH and subsequent cortisol production by the adrenal. Human Pro-Corticoliberin is 170 aa in length (aa 25 - 194). If unprocessed, it undergoes N-terminal amidation to generate a polypeptide 168 aa in length (aa 27 - 194). Secreted Pro-Corticoliberin is both bioactive and binds to 37 kDa Corticoliberin-PB. In the placenta, Pro-Corticoliberin is only occasionally cleaved to generate mature Corticoliberin (aa 152 - 192); in the brain, it undergoes active internal proteolysis to generate multiple fragments, including the 5 kDa mature peptide. Over aa 25 - 196, human Pro-Corticoliberin shares 78% aa identity with mouse Pro-Corticoliberin.

Preparation

Produced in sheep immunized with purified, *E. coli*-derived, recombinant human Pro-Corticoliberin (rhPro-Corticoliberin; aa 25 - 796; Accession # P06850). Human Pro-Corticoliberin specific IgG was purified by human Pro-Corticoliberin affinity chromatography.

Formulation

Lyophilized from a 0.2 µm filtered solution in phosphate-buffered saline (PBS) with 5% trehalose.

Reconstitution

Reconstitute with sterile PBS. If 0.5 mL of PBS is used, the antibody concentration will be 0.2 mg/mL.

Storage

Lyophilized samples are stable for twelve months from date of receipt when stored at -20° C to -70° C. Upon reconstitution, the antibody can be stored at 2° - 8° C for 1 month without detectable loss of activity. Reconstituted antibody can also be aliquotted and stored frozen at -20° C to -70° C in a **manual defrost freezer** for six months without detectable loss of activity. **Avoid repeated freeze-thaw cycles.**

Specificity

This antibody has been selected for its ability to recognize human Pro-Corticoliberin in direct ELISAs and Western blots.

Applications

Western blot - An antibody concentration of 1.0 µg/mL is recommended.

Direct ELISA - This antibody can be used at 0.5 - 1.0 µg/mL with the appropriate secondary reagents to detect human Pro-Corticoliberin. The detection limit for rhPro-Corticoliberin is approximately 0.5 ng/well.

Optimal dilutions should be determined by each laboratory for each application.

FOR RESEARCH USE ONLY. NOT FOR USE IN HUMANS.

R&D Systems, Inc.
1-800-343-7475

8/20/09