

## DESCRIPTION

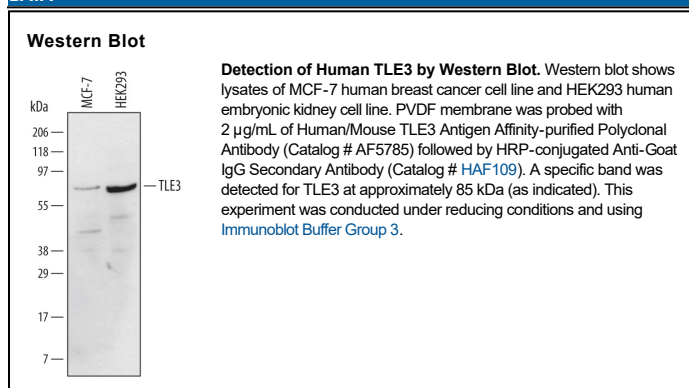
<b>Species Reactivity</b>	Human/Mouse
<b>Specificity</b>	Detects endogenous human TLE3 in Western blots.
<b>Source</b>	Polyclonal Goat IgG
<b>Purification</b>	Antigen Affinity-purified
<b>Immunogen</b>	<i>E. coli</i> -derived recombinant human TLE3 His11-Asn200 Accession # Q04726
<b>Formulation</b>	Lyophilized from a 0.2 µm filtered solution in PBS with Trehalose. See Certificate of Analysis for details. *Small pack size (-SP) is supplied either lyophilized or as a 0.2 µm filtered solution in PBS.

## APPLICATIONS

**Please Note:** Optimal dilutions should be determined by each laboratory for each application. [General Protocols](#) are available in the Technical Information section on our website.

	Recommended Concentration	Sample
<b>Western Blot</b>	2 µg/mL	See Below

## DATA



## PREPARATION AND STORAGE

<b>Reconstitution</b>	Reconstitute at 0.2 mg/mL in sterile PBS.
<b>Shipping</b>	The product is shipped at ambient temperature. Upon receipt, store it immediately at the temperature recommended below. *Small pack size (-SP) is shipped with polar packs. Upon receipt, store it immediately at -20 to -70 °C
<b>Stability &amp; Storage</b>	<b>Use a manual defrost freezer and avoid repeated freeze-thaw cycles.</b> <ul style="list-style-type: none"> <li>12 months from date of receipt, -20 to -70 °C as supplied.</li> <li>1 month, 2 to 8 °C under sterile conditions after reconstitution.</li> <li>6 months, -20 to -70 °C under sterile conditions after reconstitution.</li> </ul>

## BACKGROUND

TLE3 (Transducin-Like Enhancer of Split 3; also ESG3 and GRG3) is an 84-86 kDa member of the WD repeat Groucho/TLE family of transcriptional repressors. It is widely expressed in the embryo, and in differentiating epithelial cells in the adult. TLE3 binds to a number of transcription factors as a heterooligomer, or to itself as a homotetramer. Oligomerization is essential for activity. Human TLE3 is 772 amino acids (aa) in length. It contains a Gln(Q)-rich region that mediates oligomerization (aa 1-131), a CCN domain that contains an NLS plus CKII and cdc2K kinase site (aa 199-268), and seven WD repeats that mediate protein-protein interaction (aa 484-771). Potentially there are multiple splice variants. Over aa 11-200, human TLE3 shares 99% aa identity with mouse TLE3.