

DESCRIPTION

| | |
|---------------------------|---|
| Species Reactivity | Mouse |
| Specificity | Detects mouse GFR α -like in direct ELISAs and Western blots. |
| Source | Polyclonal Sheep IgG |
| Purification | Antigen Affinity-purified |
| Immunogen | Chinese hamster ovary cell line CHO-derived recombinant mouse GFR α -like isoform A Gln20-Gly349 Accession # Q6SJE0 |
| Formulation | Lyophilized from a 0.2 μ m filtered solution in PBS with Trehalose. See Certificate of Analysis for details. *Small pack size (-SP) is supplied either lyophilized or as a 0.2 μ m filtered solution in PBS. |

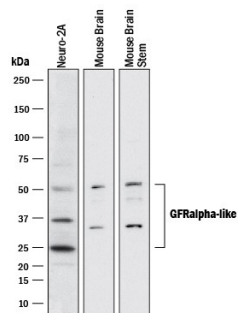
APPLICATIONS

Please Note: Optimal dilutions should be determined by each laboratory for each application. [General Protocols](#) are available in the Technical Information section on our website.

| | Recommended Concentration | Sample |
|-----------------------------|---------------------------|-----------|
| Western Blot | 2 μ g/mL | See Below |
| Immunohistochemistry | 5-15 μ g/mL | See Below |

DATA

Western Blot



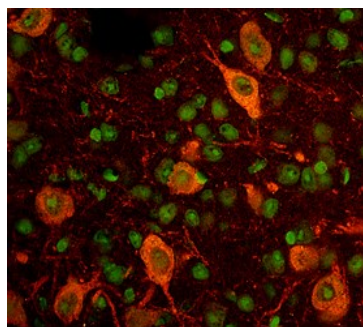
Detection of Mouse GFR α -like by Western Blot. Western blot shows lysates of Neuro-2A mouse neuroblastoma cell line, mouse brain and mouse brain stem. PVDF membrane was probed with 2 μ g/mL of Sheep Anti-Mouse GFR α -like Antigen Affinity-purified Polyclonal Antibody (Catalog # AF5728) followed by HRP-conjugated Anti-Sheep IgG Secondary Antibody (Catalog # HAF016). Specific bands were detected for GFR α -like at approximately 25 and 50 kDa (as indicated). This experiment was conducted under reducing conditions and using Immunoblot Buffer Group 1.

Immunohistochemistry



GFR α -like in Mouse Spinal Cord. GFR α -like was detected in immersion fixed paraffin-embedded sections of mouse spinal cord using Sheep Anti-Mouse GFR α -like Antigen Affinity-purified Polyclonal Antibody (Catalog # AF5728) at 5 μ g/mL for 1 hour at room temperature followed by incubation with the Anti-Sheep IgG VisUCyte™ HRP Polymer Antibody (Catalog # VC006). Before incubation with the primary antibody, tissue was subjected to heat-induced epitope retrieval using Antigen Retrieval Reagent-Basic (Catalog # CTS013). Tissue was stained using DAB (brown) and counterstained with DAPI (blue). Specific staining was localized to dorsal and ventral horns. Staining was performed using our protocol for IHC Staining with VisUCyte HRP Polymer Detection Reagents.

Immunohistochemistry



GFR α -like in Mouse Brain. GFR α -like was detected in immersion fixed frozen sections of mouse brain using Sheep Anti-Mouse GFR α -like Antigen Affinity-purified Polyclonal Antibody (Catalog # AF5728) at 15 μ g/mL overnight at 4 °C. Tissue was stained using the NorthernLights™ 557-conjugated Anti-Sheep IgG Secondary Antibody (red; Catalog # NL010) and counterstained with Fluoro Nissl Green (green). View our protocol for [Fluorescent IHC Staining of Frozen Tissue Sections](#).

PREPARATION AND STORAGE

| | |
|--------------------------------|---|
| Reconstitution | Reconstitute at 0.2 mg/mL in sterile PBS. |
| Shipping | The product is shipped at ambient temperature. Upon receipt, store it immediately at the temperature recommended below. *Small pack size (-SP) is shipped with polar packs. Upon receipt, store it immediately at -20 to -70 °C |
| Stability & Storage | Use a manual defrost freezer and avoid repeated freeze-thaw cycles. <ul style="list-style-type: none"> 12 months from date of receipt, -20 to -70 °C as supplied. 1 month, 2 to 8 °C under sterile conditions after reconstitution. 6 months, -20 to -70 °C under sterile conditions after reconstitution. |

BACKGROUND

GFR α -like (GDNF receptor-alpha-like) is a predicted 26 and 44 kDa glycoprotein (1) and distant member of the GDNFR family of proteins. It is expressed on both fetal and adult neurons of the CNS, and would appear to function as an anti-apoptotic molecule during neuronal stress. Mature mouse GFR α -like is a 374 amino acid (aa) type I transmembrane protein. It contains a 330 aa extracellular region that shows a Gas1 domain (aa 131-210), and a 23 aa cytoplasmic tail. There is one splice variant that is likely soluble and shows a four aa substitution for aa 235-393. Over aa 20-349, mouse GFR α -like shares 72% aa identity with human GFR α -like.

References:

1. Li, Z. *et al.* (2005) J. Neurochem. **95**:361.