

DESCRIPTION

Species Reactivity	Human
Specificity	Detects human FOLR2 in direct ELISAs and Western blots. In direct ELISAs, less than 5% cross-reactivity with recombinant human (rh) FOLR1 and rhFOLR3 is observed.
Source	Polyclonal Sheep IgG
Purification	Antigen Affinity-purified
Immunogen	Chinese hamster ovary cell line CHO-derived recombinant human FOLR2 Gln22-His228 Accession # P14207
Formulation	Lyophilized from a 0.2 µm filtered solution in PBS with Trehalose. See Certificate of Analysis for details. *Small pack size (-SP) is supplied either lyophilized or as a 0.2 µm filtered solution in PBS.

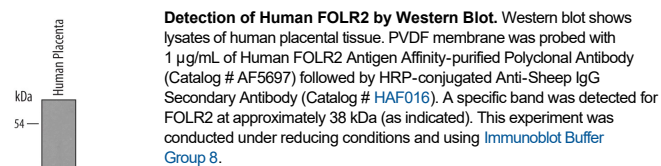
APPLICATIONS

Please Note: Optimal dilutions should be determined by each laboratory for each application. *General Protocols* are available in the *Technical Information* section on our website.

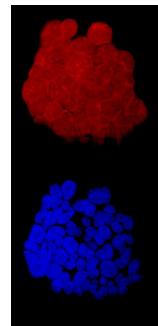
	Recommended Concentration	Sample
Western Blot	1 µg/mL	See Below
Immunocytochemistry	5-15 µg/mL	See Below

DATA

Western Blot



Immunocytochemistry



FOLR2 in Human Neutrophils. FOLR2 was detected in immersion fixed human neutrophils using Human FOLR2 Antigen Affinity-purified Polyclonal Antibody (Catalog # AF5697) at 10 µg/mL for 3 hours at room temperature. Cells were stained using the NorthernLights™ 557-conjugated Anti-Sheep IgG Secondary Antibody (red, upper panel; Catalog # NL010) and counterstained with DAPI (blue, lower panel). Specific staining was localized to cell surfaces and cytoplasm. View our protocol for [Fluorescent ICC Staining of Non-adherent Cells](#).

PREPARATION AND STORAGE

Reconstitution	Reconstitute at 0.2 mg/mL in sterile PBS.
Shipping	The product is shipped at ambient temperature. Upon receipt, store it immediately at the temperature recommended below. *Small pack size (-SP) is shipped with polar packs. Upon receipt, store it immediately at -20 to -70 °C
Stability & Storage	Use a manual defrost freezer and avoid repeated freeze-thaw cycles. <ul style="list-style-type: none"> • 12 months from date of receipt, -20 to -70 °C as supplied. • 1 month, 2 to 8 °C under sterile conditions after reconstitution. • 6 months, -20 to -70 °C under sterile conditions after reconstitution.

BACKGROUND

Folate Receptor 2 (FOLR2), also known as Folate Receptor beta, is a 38 kDa protein that mediates the cellular uptake of folic acid and reduced folates. Dietary folates are required for many key metabolic processes including nucleotide and methionine synthesis, the interconversion of glycine and serine, and histidine breakdown (1, 2). Mature FOLR2 is an N-glycosylated protein that is anchored to the cell surface by a GPI linkage (3, 4). Human FOLR2 shares 83% amino acid sequence identity with mouse and rat FOLR2. FOLR2 is predominantly expressed in placenta, cells of the neutrophilic lineage, and some CD34+ hematopoietic progenitor cells (4-6). It is upregulated on myeloid leukemias, head and neck squamous cell carcinomas, and several nonepithelial cancers (3, 5, 7). It is also upregulated on macrophages and monocytes at chronic inflammatory sites including rheumatoid arthritis synovium and glioblastoma (8-10). FOLR2 knockout mice do not show gross morphological defects, but they exhibit increased sensitivity to arsenate-induced teratogenicity (11, 12).

References:

1. Fowler, B. *et al.* (2001) *Kidney Int.* **59**:S-221.
2. Kelemen, L.E. (2006) *Int. J. Cancer* **119**:243.
3. Shen, F. *et al.* (1994) *Biochemistry* **33**:1209.
4. Ratnam, M. *et al.* (1989) *Biochemistry* **28**:8249.
5. Ross, J.F. *et al.* (1999) *Cancer* **85**:348.
6. Reddy, J.A. *et al.* (1999) *Blood* **93**:3940.
7. Ross, J.F. *et al.* (1994) *Cancer* **73**:2432.
8. Nakashima-Matsushita, N. *et al.* (1999) *Arthritis Rheum.* **42**:1609.
9. van der Heijden, J.W. *et al.* (2009) *Arthritis Rheum.* **60**:12.
10. Nagai, T. *et al.* (2009) *Cancer Immunol. Immunother.* Feb 24 epub.
11. Piedrahita, J.A. *et al.* (1999) *Nat. Genet.* **23**:228.
12. Wlodarczyk, B. *et al.* (2001) *Toxicol. Appl. Pharmacol.* **177**:238.