

DESCRIPTION

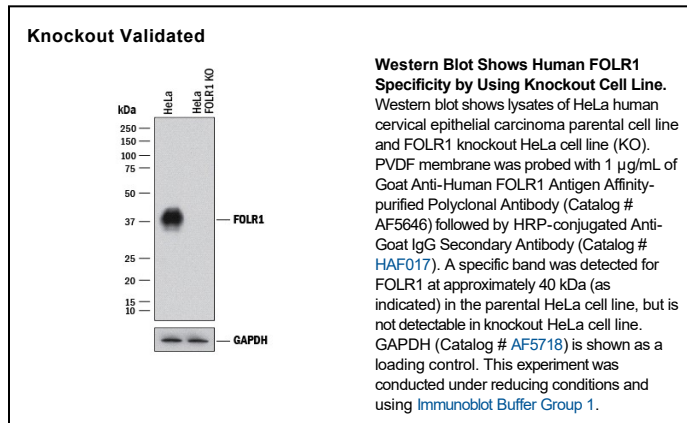
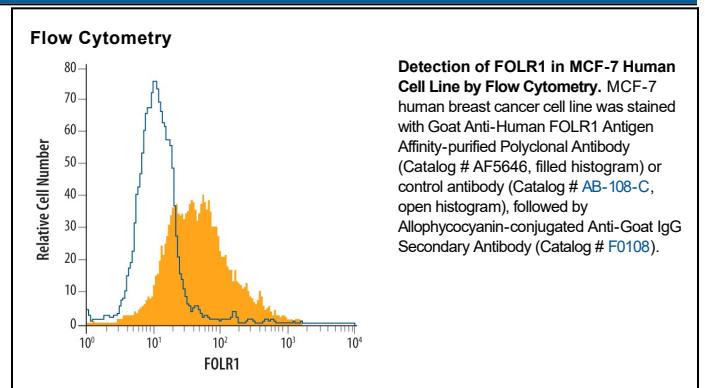
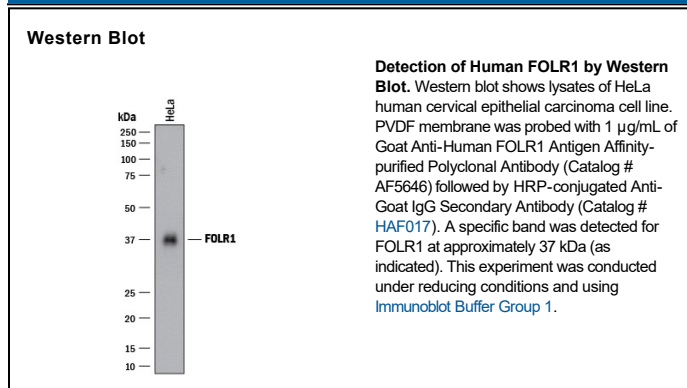
Species Reactivity	Human
Specificity	Detects human FOLR1 in direct ELISAs and Western blots. In direct ELISAs, less than 15% cross-reactivity with recombinant mouse (rm) FOLR1 and recombinant human (rh) FOLR3 is observed.
Source	Polyclonal Goat IgG
Purification	Antigen Affinity-purified
Immunogen	Chinese hamster ovary cell line CHO-derived recombinant human FOLR1 Arg25-Met233 Accession # P15328
Formulation	Lyophilized from a 0.2 µm filtered solution in PBS with Trehalose. See Certificate of Analysis for details. *Small pack size (-SP) is supplied either lyophilized or as a 0.2 µm filtered solution in PBS.

APPLICATIONS

Please Note: Optimal dilutions should be determined by each laboratory for each application. *General Protocols* are available in the *Technical Information* section on our website.

	Recommended Concentration	Sample
Western Blot	1 µg/mL	See Below
Flow Cytometry	0.25 µg/10 ⁶ cells	See Below
CyTOF-ready	Ready to be labeled using established conjugation methods. No BSA or other carrier proteins that could interfere with conjugation.	
Knockout Validated	FOLR1 is specifically detected in HeLa human cervical epithelial carcinoma parental cell line but is not detectable in FOLR1 knockout HeLa cell line.	

DATA



PREPARATION AND STORAGE

Reconstitution	Reconstitute at 0.2 mg/mL in sterile PBS.
Shipping	The product is shipped at ambient temperature. Upon receipt, store it immediately at the temperature recommended below. *Small pack size (-SP) is shipped with polar packs. Upon receipt, store it immediately at -20 to -70 °C
Stability & Storage	Use a manual defrost freezer and avoid repeated freeze-thaw cycles. <ul style="list-style-type: none"> ● 12 months from date of receipt, -20 to -70 °C as supplied. ● 1 month, 2 to 8 °C under sterile conditions after reconstitution. ● 6 months, -20 to -70 °C under sterile conditions after reconstitution.

BACKGROUND

Folate Receptor 1 (FOLR1), also known as Folate Receptor alpha and Folate Binding Protein (FBP), is a 37-42 kDa protein that mediates the cellular uptake of folic acid and reduced folates. Dietary folates are required for many key metabolic processes including nucleotide and methionine synthesis, the interconversion of glycine and serine, and histidine breakdown (1, 2). Mature FOLR1 is an N-glycosylated protein that is anchored to the cell surface by a GPI linkage (3-6). Human FOLR1 shares 83% amino acid sequence identity with mouse and rat FOLR1. FOLR1 is predominantly expressed on epithelial cells and is dramatically upregulated on many carcinomas (7, 8). It is critically required during early embryogenesis as shown in knockout mice which die *in utero* with gross morphological defects (9). FOLR1 is internalized to the endosomal system where it dissociates from its ligand before recycling to the cell surface (6, 10). A soluble form of FOLR1 can be proteolytically shed from the cell surface into the serum and breast milk (11).

References:

1. Kelemen, L.E. (2006) *Int. J. Cancer* **119**:243.
2. Fowler, B. *et al.* (2001) *Kidney Int.* **59**:S-221.
3. Luhrs, C.A. *et al.* (1989) *J. Biol. Chem.* **264**:21446.
4. Lacey, S.W. *et al.* (1989) *J. Clin. Invest.* **84**:715.
5. Elwood, P.C. (1989) *J. Biol. Chem.* **264**:14893.
6. Rijnboutt, S. *et al.* (1996) *J. Cell Biol.* **132**:35.
7. Ross, J.F. *et al.* (1994) *Cancer* **73**:2432.
8. Parker, N. *et al.* (2005) *Anal. Biochem.* **338**:284.
9. Piedrahita, J.A. *et al.* (1999) *Nat. Genet.* **23**:228.
10. Paulos, C.M. *et al.* (2004) *Mol. Pharmacol.* **66**:1406.
11. Elwood, P.C. *et al.* (1991) *J. Biol. Chem.* **266**:2346.