

## DESCRIPTION

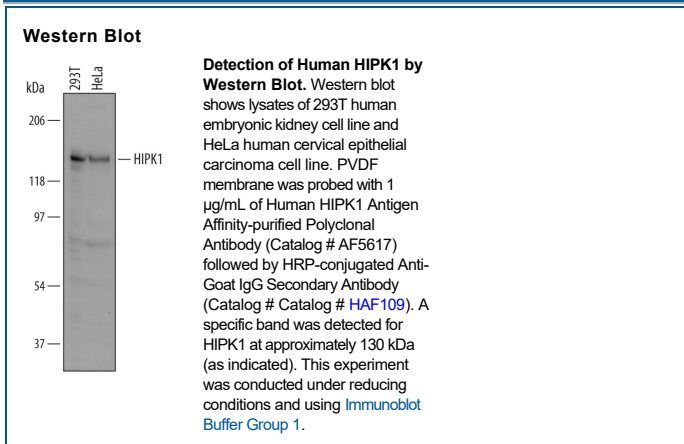
<b>Species Reactivity</b>	Human
<b>Specificity</b>	Detects endogenous human HIPK1 in Western blots. Approximately 15% cross reactivity to HIPK2 is observed in Western blot.
<b>Source</b>	Polyclonal Goat IgG
<b>Purification</b>	Antigen Affinity-purified
<b>Immunogen</b>	<i>E. coli</i> -derived recombinant human HIPK1 Gln701-Ser900 Accession # Q86Z02
<b>Formulation</b>	Lyophilized from a 0.2 µm filtered solution in PBS with Trehalose. See Certificate of Analysis for details. *Small pack size (-SP) is supplied either lyophilized or as a 0.2 µm filtered solution in PBS.

## APPLICATIONS

**Please Note:** Optimal dilutions should be determined by each laboratory for each application. [General Protocols](#) are available in the Technical Information section on our website.

	<b>Recommended Concentration</b>	<b>Sample</b>
<b>Western Blot</b>	1 µg/mL	See Below

## DATA



## PREPARATION AND STORAGE

<b>Reconstitution</b>	Reconstitute at 0.2 mg/mL in sterile PBS.
<b>Shipping</b>	The product is shipped at ambient temperature. Upon receipt, store it immediately at the temperature recommended below. *Small pack size (-SP) is shipped with polar packs. Upon receipt, store it immediately at -20 to -70 °C
<b>Stability &amp; Storage</b>	<b>Use a manual defrost freezer and avoid repeated freeze-thaw cycles.</b> <ul style="list-style-type: none"> <li>• 12 months from date of receipt, -20 to -70 °C as supplied.</li> <li>• 1 month, 2 to 8 °C under sterile conditions after reconstitution.</li> <li>• 6 months, -20 to -70 °C under sterile conditions after reconstitution.</li> </ul>

## BACKGROUND

HIPK1 (Homeodomain-interacting protein kinase 1) is a 120-130 kDa member of the HIPK subfamily, CMGC Ser/Thr family of protein kinases. It is ubiquitously expressed, and plays a role in transcriptional regulation and signal transduction. Human HIPK1 is 1210 amino acids (aa) in length. It contains a protein kinase domain (aa 190-518) that phosphorylates itself as well as Daxx and p53, an interaction region between aa 581-847, a PEST sequence (aa 889-973) and a YH domain (aa 1066-1209) that recruits CtBP. Four different splice variants have been identified. Over aa 701-900, human and mouse HIPK1 share 97% aa identity.