

## DESCRIPTION

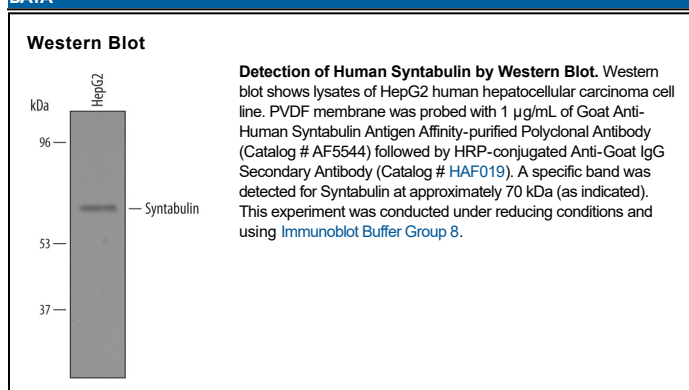
<b>Species Reactivity</b>	Human
<b>Specificity</b>	Detects human Syntabulin in direct ELISAs and Western blots.
<b>Source</b>	Polyclonal Goat IgG
<b>Purification</b>	Antigen Affinity-purified
<b>Immunogen</b>	<i>E. coli</i> -derived recombinant human Syntabulin Gln489-Arg656 Accession # Q9NX95
<b>Formulation</b>	Lyophilized from a 0.2 µm filtered solution in PBS with Trehalose. See Certificate of Analysis for details. *Small pack size (-SP) is supplied either lyophilized or as a 0.2 µm filtered solution in PBS.

## APPLICATIONS

**Please Note:** Optimal dilutions should be determined by each laboratory for each application. [General Protocols](#) are available in the Technical Information section on our website.

	<b>Recommended Concentration</b>	<b>Sample</b>
<b>Western Blot</b>	1 µg/mL	See Below

## DATA



## PREPARATION AND STORAGE

<b>Reconstitution</b>	Reconstitute at 0.2 mg/mL in sterile PBS.
<b>Shipping</b>	The product is shipped at ambient temperature. Upon receipt, store it immediately at the temperature recommended below. *Small pack size (-SP) is shipped with polar packs. Upon receipt, store it immediately at -20 to -70 °C
<b>Stability &amp; Storage</b>	<b>Use a manual defrost freezer and avoid repeated freeze-thaw cycles.</b> <ul style="list-style-type: none"> <li>12 months from date of receipt, -20 to -70 °C as supplied.</li> <li>1 month, 2 to 8 °C under sterile conditions after reconstitution.</li> <li>6 months, -20 to -70 °C under sterile conditions after reconstitution.</li> </ul>

## BACKGROUND

Syntabulin (also Golgi-localized synaphilin-related protein) is a 70-75 kDa molecule that belongs to the syntaxin-binding and kinesin-1 family of motor adaptor proteins. It is highly spliced, with various forms associated with different tissues. In neurons, it anchors syntaxin-1 to KIF5B, creating a complex by which synaptic components can be transported to synaptic terminals. Human Syntabulin is a type II transmembrane (TM) protein 663 amino acids (aa) in length. It contains one coiled-coil region (aa 271-353) and a TM domain between aa 606-626. Alternate splice forms show alternate start sites at Met120 and Met207, a five aa substitution for aa 1-8, a 16 aa insertion after Lys8, and an eight aa substitution for aa 1-76. Over aa 486-653, human Syntabulin shares 83% aa identity with mouse Syntabulin.