

DESCRIPTION

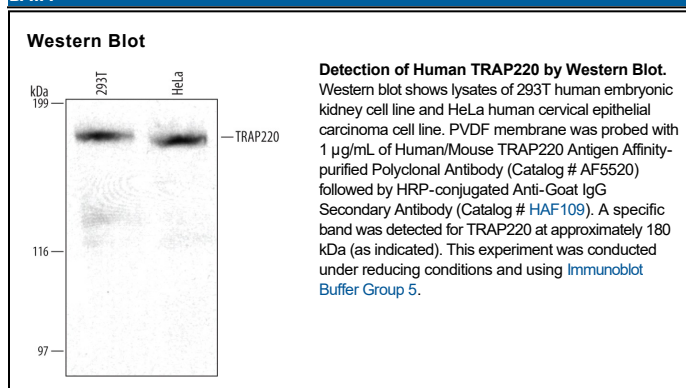
Species Reactivity	Human/Mouse
Specificity	Detects endogenous human TRAP220 in Western blots.
Source	Polyclonal Goat IgG
Purification	Antigen Affinity-purified
Immunogen	<i>E. coli</i> -derived recombinant human TRAP220 Phe878-Phe1031 Accession # Q15648
Formulation	Lyophilized from a 0.2 µm filtered solution in PBS with Trehalose. See Certificate of Analysis for details. *Small pack size (-SP) is supplied either lyophilized or as a 0.2 µm filtered solution in PBS.

APPLICATIONS

Please Note: Optimal dilutions should be determined by each laboratory for each application. *General Protocols* are available in the *Technical Information* section on our website.

	Recommended Concentration	Sample
Western Blot	1 µg/mL	See Below

DATA



PREPARATION AND STORAGE

Reconstitution	Reconstitute at 0.2 mg/mL in sterile PBS.
Shipping	The product is shipped at ambient temperature. Upon receipt, store it immediately at the temperature recommended below. *Small pack size (-SP) is shipped with polar packs. Upon receipt, store it immediately at -20 to -70 °C
Stability & Storage	Use a manual defrost freezer and avoid repeated freeze-thaw cycles. <ul style="list-style-type: none"> ● 12 months from date of receipt, -20 to -70 °C as supplied. ● 1 month, 2 to 8 °C under sterile conditions after reconstitution. ● 6 months, -20 to -70 °C under sterile conditions after reconstitution.

BACKGROUND

TRAP220 (Thyroid hormone receptor associated protein 220 kDa) is a widely expressed member of the Mediator complex subunit 1 family of proteins. It constitutes one of some 25 subunits that make up the Mediator complex. Here, it serves as a scaffold protein that links nuclear hormone receptors to RNA polymerase II. Human TRAP220 is 1581 amino acids (aa) in length. It contains a Mediator complex interaction region (aa 108-390) and two nuclear hormone receptor binding boxes (aa 600-670). Phosphorylation of Thr1032 and Thr1457 materially increases TRAP220 activity. There are at least two splice variants. One shows a 22 aa substitution for aa 756-1581 while another shows a nine aa substitution for aa 548-1581. Over aa 878-1031, human TRAP220 shares 92% aa identity with mouse TRAP220.