

DESCRIPTION

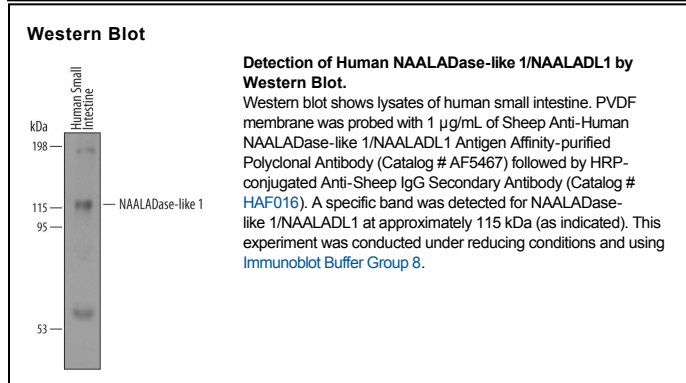
Species Reactivity	Human
Specificity	Detects human NAALADase-like 1/NAALADL1 in direct ELISAs and Western blots. In direct ELISAs, less than 1% cross-reactivity with recombinant human (rh) NAALADase I, recombinant mouse NAALADase II, and rhNAALADase II is observed.
Source	Polyclonal Sheep IgG
Purification	Antigen Affinity-purified
Immunogen	Chinese hamster ovary cell line CHO-derived recombinant human NAALADase-like 1/NAALADL1 Ala32-Leu740 Accession # NP_005459
Formulation	Lyophilized from a 0.2 µm filtered solution in PBS with Trehalose. See Certificate of Analysis for details. *Small pack size (-SP) is supplied as a 0.2 µm filtered solution in PBS.

APPLICATIONS

Please Note: Optimal dilutions should be determined by each laboratory for each application. *General Protocols* are available in the *Technical Information* section on our website.

	Recommended Concentration	Sample
Western Blot	1 µg/mL	See Below
Immunoprecipitation	25 µg/mL	Conditioned cell culture medium spiked with Recombinant Human NAALADase-like 1/NAALADL1, see our available Western blot detection antibodies

DATA



PREPARATION AND STORAGE

Reconstitution	Reconstitute at 0.2 mg/mL in sterile PBS.
Shipping	The product is shipped at ambient temperature. Upon receipt, store it immediately at the temperature recommended below. *Small pack size (-SP) is shipped with polar packs. Upon receipt, store it immediately at -20 to -70 °C
Stability & Storage	Use a manual defrost freezer and avoid repeated freeze-thaw cycles. <ul style="list-style-type: none"> ● 12 months from date of receipt, -20 to -70 °C as supplied. ● 1 month, 2 to 8 °C under sterile conditions after reconstitution. ● 6 months, -20 to -70 °C under sterile conditions after reconstitution.

BACKGROUND

NAALADase-like1, also known as NAALADL1, (N-acetylated α-linked acidic dipeptidase like 1; also Ileal dipeptidylpeptidase) is a 100-115 kDa member of the peptidase M28 family of enzymes. It is found in the brush border of ileal epithelium and demonstrates serine protease activity. Human NAALADL1 is a type II transmembrane glycoprotein that is 740 amino acids (aa) in length. It contains an extended extracellular domain (aa 29-740) that shows a protease-associated region (aa 109-335) with key catalytic residues at Ser617, Asp657 and His687. Multiple splice variants exist. Two show deletions of aa 161-201 and 296-330, respectively, while a third shows a 51 aa insertion after Pro359. Three show 18 to 42 aa substitutions after Pro502, with premature truncations after Ile522, Thr543 and Leu579. A final isoform shows a 17 aa substitution for aa 619-740. Over aa 32-740, human NAALADL1 shares 81% aa identity with mouse NAALADL1.