

## DESCRIPTION

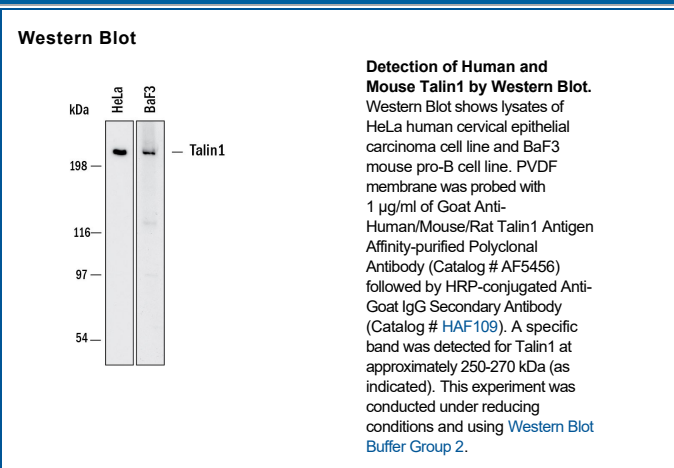
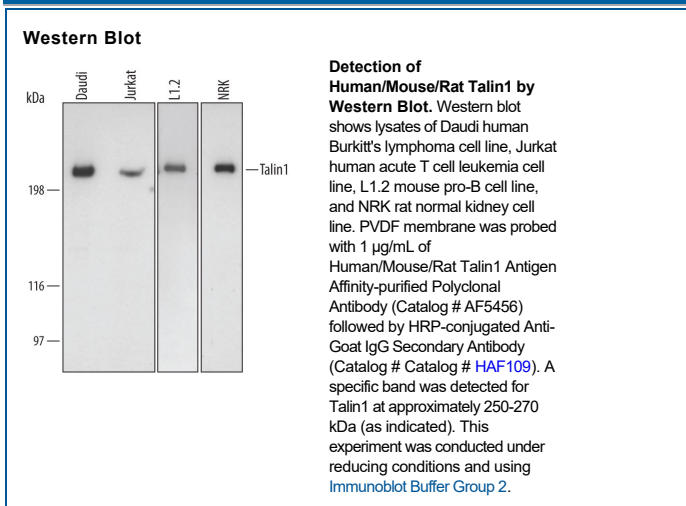
<b>Species Reactivity</b>	Human/Mouse/Rat
<b>Specificity</b>	Detects human, mouse and rat Talin1 in Western blots.
<b>Source</b>	Polyclonal Goat IgG
<b>Purification</b>	Antigen Affinity-purified
<b>Immunogen</b>	<i>E. coli</i> -derived recombinant human Talin1 Ala975-Ser1181 Accession # Q9Y490
<b>Formulation</b>	Lyophilized from a 0.2 µm filtered solution in PBS with Trehalose. See Certificate of Analysis for details. *Small pack size (-SP) is supplied either lyophilized or as a 0.2 µm filtered solution in PBS.

## APPLICATIONS

**Please Note:** Optimal dilutions should be determined by each laboratory for each application. [General Protocols](#) are available in the Technical Information section on our website.

	<b>Recommended Concentration</b>	<b>Sample</b>
<b>Western Blot</b>	1 µg/mL	See Below

## DATA



## PREPARATION AND STORAGE

<b>Reconstitution</b>	Reconstitute at 0.2 mg/mL in sterile PBS. For liquid material, refer to CoA for concentration.
<b>Shipping</b>	Lyophilized product is shipped at ambient temperature. Liquid small pack size (-SP) is shipped with polar packs. Upon receipt, store immediately at the temperature recommended below.
<b>Stability &amp; Storage</b>	Use a manual defrost freezer and avoid repeated freeze-thaw cycles. <ul style="list-style-type: none"> <li>12 months from date of receipt, -20 to -70 °C as supplied.</li> <li>1 month, 2 to 8 °C under sterile conditions after reconstitution.</li> <li>6 months, -20 to -70 °C under sterile conditions after reconstitution.</li> </ul>

## BACKGROUND

Talin1 (*talus*; Latin for ankle, the shape of a focal adhesion plaque complex) is a 250-270 kDa member of the I/LWEQ module superfamily. When activated, it serves as a cytoplasmic, homodimeric link between integrins and vinculin, an actin organizer. Human Talin1 is 2541 amino acids (aa) in length and contains one globular N-terminal FERM domain that binds integrin cytodomains (aa 86-403), and a rod shaped C-terminus (aa 482-2541) that binds vinculin, and contains an I/LWEQ dimerization domain (aa 2293-2533). Over amino acids 975-1181, human Talin1 shares 98% aa identity with mouse Talin1.