

DESCRIPTION

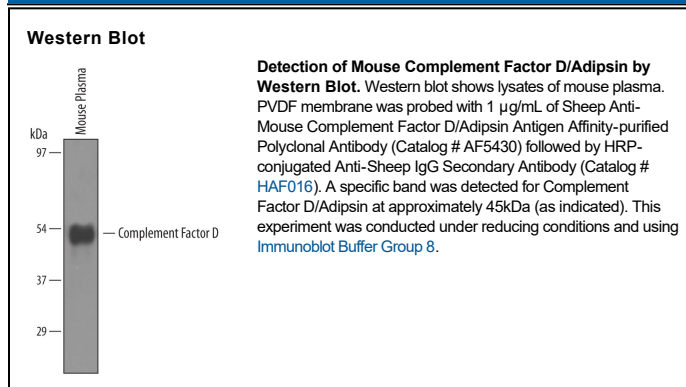
Species Reactivity	Mouse
Specificity	Detects mouse Complement Factor D/Adipsin in direct ELISAs and Western blots. In direct ELISAs, approximately 10% cross-reactivity with recombinant human (rh) Complement Factor D is observed and less than 5% cross-reactivity with rhGranzyme A is observed.
Source	Polyclonal Sheep IgG
Purification	Antigen Affinity-purified
Immunogen	Mouse myeloma cell line NS0-derived recombinant mouse Complement Factor D/Adipsin Ile26-Ser259 Accession # P03953
Formulation	Lyophilized from a 0.2 µm filtered solution in PBS with Trehalose. See Certificate of Analysis for details. *Small pack size (-SP) is supplied either lyophilized or as a 0.2 µm filtered solution in PBS.

APPLICATIONS

Please Note: Optimal dilutions should be determined by each laboratory for each application. *General Protocols* are available in the *Technical Information* section on our website.

	Recommended Concentration	Sample
Western Blot	1 µg/mL	See Below
Immunoprecipitation	25 µg/mL	Conditioned cell culture medium spiked with Recombinant Mouse Complement Factor D/Adipsin, see our available Western blot detection antibodies

DATA



PREPARATION AND STORAGE

Reconstitution	Reconstitute at 0.2 mg/mL in sterile PBS.
Shipping	The product is shipped at ambient temperature. Upon receipt, store it immediately at the temperature recommended below. *Small pack size (-SP) is shipped with polar packs. Upon receipt, store it immediately at -20 to -70 °C
Stability & Storage	<p>Use a manual defrost freezer and avoid repeated freeze-thaw cycles.</p> <ul style="list-style-type: none"> ● 12 months from date of receipt, -20 to -70 °C as supplied. ● 1 month, 2 to 8 °C under sterile conditions after reconstitution. ● 6 months, -20 to -70 °C under sterile conditions after reconstitution.

BACKGROUND

Complement Factor D (also Adipsin, C3 convertase activator and Properdin factor D) is a 37-43 kDa member of the S1 peptidase family of enzymes. In mouse, it is secreted by fat cells and helps form C3 convertase, a complex of C3b, Factor B and Factor D. This complex cleaves C3 into C3b and C3a, the latter of which is converted into ASP, a molecule that binds the adipocyte receptor C5L2 and induces triglyceride synthesis. Mature mouse Factor D is 234 amino acids (aa) in length (aa 26-259). It contains one peptidase S1 domain that cleaves an Arg-Lys bond (aa 26-254). There are at least two potential alternative splice forms. One shows a two aa substitution for aa 1-71, and a second shows a 15 aa substitution for aa 1-107. Mature mouse factor D shares 85% and 68% aa identity with rat and human Factor D, respectively.