

DESCRIPTION

Species Reactivity	Human
Specificity	Detects human Serpin A9 in direct ELISAs.
Source	Polyclonal Sheep IgG
Purification	Antigen Affinity-purified
Immunogen	Mouse myeloma cell line NS0-derived recombinant human Serpin A9 Ala24-Thr417 Accession # AAQ89063
Formulation	Lyophilized from a 0.2 µm filtered solution in PBS with Trehalose. See Certificate of Analysis for details. *Small pack size (-SP) is supplied either lyophilized or as a 0.2 µm filtered solution in PBS.

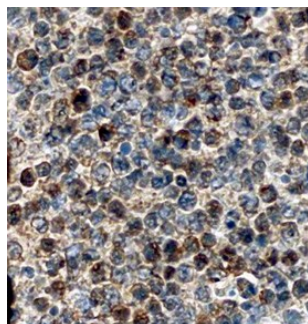
APPLICATIONS

Please Note: Optimal dilutions should be determined by each laboratory for each application. [General Protocols](#) are available in the Technical Information section on our website.

	Recommended Concentration	Sample
Immunohistochemistry	5-15 µg/mL	See Below
Immunoprecipitation	25 µg/mL	Conditioned cell culture medium spiked with Recombinant Human Serpin A9

DATA

Immunohistochemistry



Serpin A9/Centerin in Human Lymphoma.
Serpin A9/Centerin was detected in immersion fixed paraffin-embedded sections of human lymphoma using Human Serpin A9/Centerin Antigen Affinity-purified Polyclonal Antibody (Catalog # AF5429) at 10 µg/mL overnight at 4 °C. Before incubation with the primary antibody, tissue was subjected to heat-induced epitope retrieval using Antigen Retrieval Reagent-Basic (Catalog # CTS013). Tissue was stained using the Anti-Sheep HRP-DAB Cell & Tissue Staining Kit (brown; Catalog # CTS019) and counterstained with hematoxylin (blue). Specific staining was localized to cytoplasm and plasma membranes of lymphocytes. View our protocol for [Chromogenic IHC Staining of Paraffin-embedded Tissue Sections](#).

PREPARATION AND STORAGE

Reconstitution	Reconstitute at 0.2 mg/mL in sterile PBS.
Shipping	The product is shipped at ambient temperature. Upon receipt, store it immediately at the temperature recommended below. *Small pack size (-SP) is shipped with polar packs. Upon receipt, store it immediately at -20 to -70 °C
Stability & Storage	Use a manual defrost freezer and avoid repeated freeze-thaw cycles. <ul style="list-style-type: none"> • 12 months from date of receipt, -20 to -70 °C as supplied. • 1 month, 2 to 8 °C under sterile conditions after reconstitution. • 6 months, -20 to -70 °C under sterile conditions after reconstitution.

BACKGROUND

Serpin A9 (Serine proteinase inhibitor-clade A #9; also GCET1, Centerin and Serpin A11) is a 46 kDa, secreted member of the α 1-antitrypsin (clade A) subfamily, serpin superfamily of protease inhibitors. It is only produced by normal and lymphoma germinal center B cells. Its function is unknown, but it presumably acts as an inhibitor of a trypsin-like protease. Mature human Serpin A9 is presumably 394 amino acids (aa) in length. It contains one Serpin motif (aa 405-415). There are multiple splice variants associated with Serpin A9. There are alternate start sites at Met19, Met99 and Met150. A fourth isoform shows a two aa substitution for aa 369-435, while a fifth isoform shares this same substitution coupled with a 39 aa substitution for aa 1-75. A sixth variant shows a deletion of aa 91-190. Mature human Serpin A9 shares 67% aa identity with mouse Serpin A9.