

#### DESCRIPTION

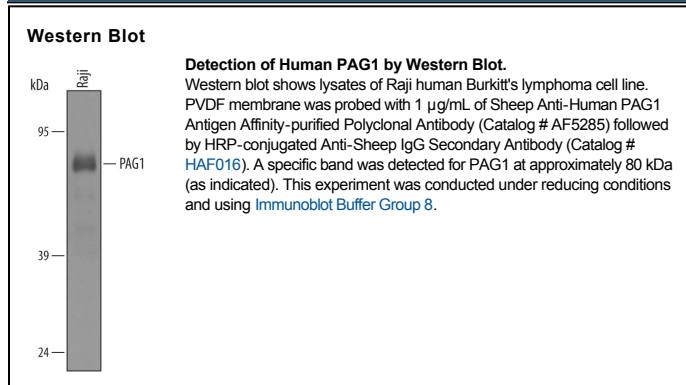
<b>Species Reactivity</b>	Human
<b>Specificity</b>	Detects human PAG1 in direct ELISAs and Western blots.
<b>Source</b>	Polyclonal Sheep IgG
<b>Purification</b>	Antigen Affinity-purified
<b>Immunogen</b>	<i>E. coli</i> -derived recombinant human PAG1 Ser38-Leu432 Accession # Q9NWX8
<b>Formulation</b>	Lyophilized from a 0.2 µm filtered solution in PBS with Trehalose. See Certificate of Analysis for details. *Small pack size (-SP) is supplied as a 0.2 µm filtered solution in PBS.

#### APPLICATIONS

**Please Note:** Optimal dilutions should be determined by each laboratory for each application. *General Protocols* are available in the *Technical Information* section on our website.

	<b>Recommended Concentration</b>	<b>Sample</b>
<b>Western Blot</b>	1 µg/mL	See Below

#### DATA



#### PREPARATION AND STORAGE

<b>Reconstitution</b>	Reconstitute at 0.2 mg/mL in sterile PBS.
<b>Shipping</b>	The product is shipped at ambient temperature. Upon receipt, store it immediately at the temperature recommended below. *Small pack size (-SP) is shipped with polar packs. Upon receipt, store it immediately at -20 to -70 °C
<b>Stability &amp; Storage</b>	<b>Use a manual defrost freezer and avoid repeated freeze-thaw cycles.</b> <ul style="list-style-type: none"> <li>• 12 months from date of receipt, -20 to -70 °C as supplied.</li> <li>• 1 month, 2 to 8 °C under sterile conditions after reconstitution.</li> <li>• 6 months, -20 to -70 °C under sterile conditions after reconstitution.</li> </ul>

#### BACKGROUND

PAG1 (Phosphoprotein-associated with glycosphingolipid-enriched microdomains 1; also Cbp/Csk-binding protein) is a 47 kDa protein that runs anomalously at 70-85 kDa in SDS-PAGE. PAG1 is a constitutively phosphorylated and palmitoylated protein that occurs in leukocyte lipid rafts. It negatively regulates Src family kinases by linking Csk to FynT. Human PAG1 is 432 amino acids (aa) in length. It is a type III (no signal sequence) transmembrane protein that contains a 16 aa extracellular region (aa 31-16) and a 395 aa cytoplasmic domain (aa 38-432). PAG1 is palmitoylated at Cys37 and phosphorylated at Tyr317 where it interacts with Csk. There is an FynT binding site at aa 131-137. One splice variant shows a 36 aa substitution for aa 293-432. Over aa 38-432, human PAG1 is 79% aa identical to mouse PAG1.