

**DESCRIPTION**

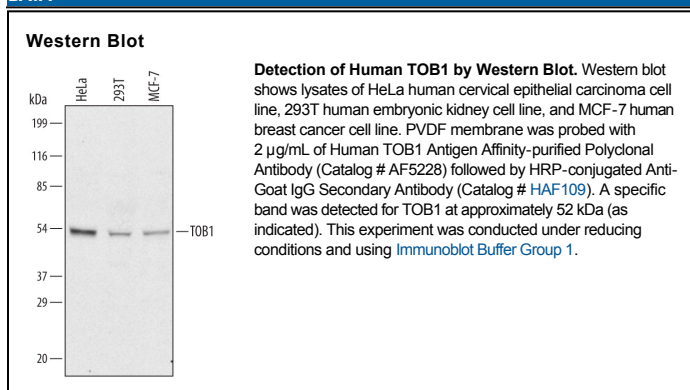
<b>Species Reactivity</b>	Human
<b>Specificity</b>	Detects endogenous human TOB1 in Western blots.
<b>Source</b>	Polyclonal Goat IgG
<b>Purification</b>	Antigen Affinity-purified
<b>Immunogen</b>	<i>E. coli</i> -derived recombinant human TOB1 Met1-Asn345 Accession # P50616
<b>Formulation</b>	Lyophilized from a 0.2 µm filtered solution in PBS with Trehalose. See Certificate of Analysis for details. *Small pack size (-SP) is supplied as a 0.2 µm filtered solution in PBS.

**APPLICATIONS**

**Please Note:** Optimal dilutions should be determined by each laboratory for each application. *General Protocols* are available in the *Technical Information* section on our website.

	<b>Recommended Concentration</b>	<b>Sample</b>
<b>Western Blot</b>	2 µg/mL	See Below

**DATA**



**PREPARATION AND STORAGE**

<b>Reconstitution</b>	Reconstitute at 0.2 mg/mL in sterile PBS.
<b>Shipping</b>	The product is shipped at ambient temperature. Upon receipt, store it immediately at the temperature recommended below. *Small pack size (-SP) is shipped with polar packs. Upon receipt, store it immediately at -20 to -70 °C
<b>Stability &amp; Storage</b>	<b>Use a manual defrost freezer and avoid repeated freeze-thaw cycles.</b> <ul style="list-style-type: none"> <li>• 12 months from date of receipt, -20 to -70 °C as supplied.</li> <li>• 1 month, 2 to 8 °C under sterile conditions after reconstitution.</li> <li>• 6 months, -20 to -70 °C under sterile conditions after reconstitution.</li> </ul>

**BACKGROUND**

TOB1 (transducer of ErbB2 protein 1) is a 45 kDa member of the BTG family of anti-proliferative proteins. It is ubiquitously expressed, and serves to negatively regulate cell cycle progression from G<sub>0</sub>/G<sub>1</sub> to S phase. This is accomplished by TOB1 suppression of cyclin D1 expression, which is abrogated by Erk2-mediated phosphorylation of Ser152/154/164 in response to growth factor stimulation. Human TOB1 is 345 amino acids (aa) in length and contains one NES (aa 2-14), a bipartite NLS (aa 18-40), a BTG domain (aa 42-130) that possesses antiproliferative activity, and two PAM domains (aa 133-143 and 268-278) that bind inducible PABP and regulate gene transcription. Human and mouse TOB1 (aa 1-345) are 94% aa identical when fourteen mouse-specific glutamines are excluded from the alignment.