

DESCRIPTION

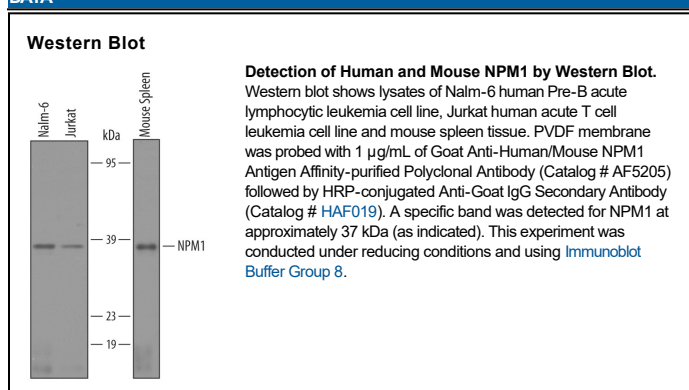
Species Reactivity	Human/Mouse
Specificity	Detects human and mouse NPM1 in direct ELISAs and Western blots.
Source	Polyclonal Goat IgG
Purification	Antigen Affinity-purified
Immunogen	<i>E. coli</i> -derived recombinant human NPM1 Met9-Leu158 Accession # P06748
Formulation	Lyophilized from a 0.2 µm filtered solution in PBS with Trehalose. See Certificate of Analysis for details. *Small pack size (-SP) is supplied either lyophilized or as a 0.2 µm filtered solution in PBS.

APPLICATIONS

Please Note: Optimal dilutions should be determined by each laboratory for each application. [General Protocols](#) are available in the Technical Information section on our website.

	Recommended Concentration	Sample
Western Blot	1 µg/mL	See Below

DATA



PREPARATION AND STORAGE

Reconstitution	Reconstitute at 0.2 mg/mL in sterile PBS.
Shipping	The product is shipped at ambient temperature. Upon receipt, store it immediately at the temperature recommended below. *Small pack size (-SP) is shipped with polar packs. Upon receipt, store it immediately at -20 to -70 °C
Stability & Storage	Use a manual defrost freezer and avoid repeated freeze-thaw cycles. <ul style="list-style-type: none"> 12 months from date of receipt, -20 to -70 °C as supplied. 1 month, 2 to 8 °C under sterile conditions after reconstitution. 6 months, -20 to -70 °C under sterile conditions after reconstitution.

BACKGROUND

NPM1 (Nucleophosmin 1; also nucleolar protein 23) is a 40 kDa member of the nucleoplasmin family of proteins. It is found in the nucleus where it performs multiple functions. NPM1 normally associates with unduplicated centrosomes. After phosphorylation at Thr199, it dissociates from centrosomes, allowing for centrosome duplication. NPM1 also negatively regulates GCN5-dependent histone acetylation during mitosis. Human NPM1 is 294 amino acids (aa) in length. It contains a Met-rich region (aa 1-9), two acidic regions (aa 120-132 and 161-188) and two NLSs (aa 152-157 and 191-197). Phosphorylation occurs at Ser4/10/70/254. Splice variants show a deletion of aa 195-223, a two aa substitution for aa 258-294 and an 11 aa substitution for aa 288-294. Over aa 9-158, human NPM1 is 97% aa identical to mouse NPM1.