

DESCRIPTION

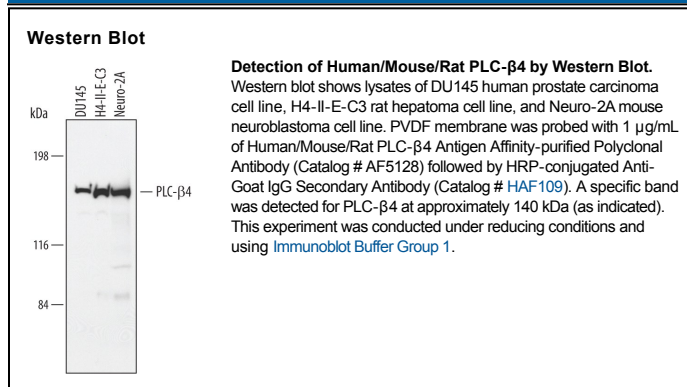
Species Reactivity	Human/Mouse/Rat
Specificity	Detects endogenous human, mouse, and, rat PLC-β4 in Western blots.
Source	Polyclonal Goat IgG
Purification	Antigen Affinity-purified
Immunogen	<i>E. coli</i> -derived recombinant human PLC-β4 Lys75-Gln250 Accession # Q15147
Formulation	Lyophilized from a 0.2 μm filtered solution in PBS with Trehalose. See Certificate of Analysis for details. *Small pack size (-SP) is supplied as a 0.2 μm filtered solution in PBS.

APPLICATIONS

Please Note: Optimal dilutions should be determined by each laboratory for each application. *General Protocols* are available in the *Technical Information* section on our website.

	Recommended Concentration	Sample
Western Blot	1 μg/mL	See Below

DATA



PREPARATION AND STORAGE

Reconstitution	Reconstitute at 0.2 mg/mL in sterile PBS.
Shipping	The product is shipped at ambient temperature. Upon receipt, store it immediately at the temperature recommended below. *Small pack size (-SP) is shipped with polar packs. Upon receipt, store it immediately at -20 to -70 °C
Stability & Storage	Use a manual defrost freezer and avoid repeated freeze-thaw cycles. <ul style="list-style-type: none"> ● 12 months from date of receipt, -20 to -70 °C as supplied. ● 1 month, 2 to 8 °C under sterile conditions after reconstitution. ● 6 months, -20 to -70 °C under sterile conditions after reconstitution.

BACKGROUND

PLC-β4 (phospholipase C-beta 4; also PLCretA) is a 130 kDa member of the β-type PLC isozyme family. It is notably expressed in cerebellum and retina. PLC-β4 is associated with rhodopsin family GPCRs, where activation of Gqα subunits initiates PLC-β4 hydrolysis of PIP2. Human PLC-β4 is 1175 amino acids (aa) in length. It contains a catalytic X-box (aa 313-463) and Y-box (aa 565-681), followed by a calcium-binding C2 domain (aa 688-786). There are multiple isoforms. One shows an alternate start site at Met114, a second contains a 40 aa substitution for the C-terminal 22 aa, a third shows a 14 aa substitution for the N-terminal 22 aa, and other forms demonstrate combinations of these alternative splice forms. Over aa 75-250, human PLC-β4 is 97% aa identical to mouse PLC-β4.