

DESCRIPTION

Species Reactivity	Mouse
Specificity	Detects mouse Reg3B in direct ELISAs and Western blots. In direct ELISAs, approximately 75% cross-reactivity with recombinant rat (rr) Reg3B is observed. In Western blots approximately 30% cross-reactivity with rrReg3B is observed. In direct ELISAs and Western blots, less than 1% cross-reactivity with rrReg3A, recombinant mouse (rm) Reg3A, and rmReg3G is observed.
Source	Polyclonal Sheep IgG
Purification	Antigen Affinity-purified
Immunogen	<i>E. coli</i> -derived recombinant mouse Reg3B Glu27-Gly175 Accession # P35230
Formulation	Lyophilized from a 0.2 µm filtered solution in PBS with Trehalose. See Certificate of Analysis for details. *Small pack size (-SP) is supplied as a 0.2 µm filtered solution in PBS.

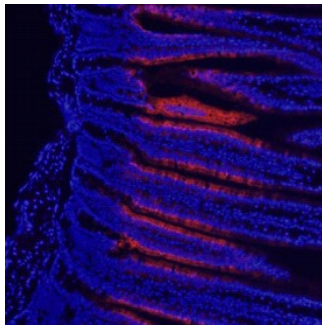
APPLICATIONS

Please Note: Optimal dilutions should be determined by each laboratory for each application. *General Protocols* are available in the *Technical Information* section on our website.

	Recommended Concentration	Sample
Western Blot	0.1 µg/mL	Recombinant Mouse Reg3B
Immunohistochemistry	5-15 µg/mL	See Below

DATA

Immunohistochemistry



Reg3B in Mouse Small Intestine. Reg3B was detected in immersion fixed frozen sections of mouse small intestine using 10 µg/mL Sheep Anti-Mouse Reg3B Antigen Affinity-purified Polyclonal Antibody (Catalog # AF5110) overnight at 4 °C. Tissue was stained with the NorthernLights™ 557-conjugated Anti-Sheep IgG Secondary Antibody (red; Catalog # NL010) and counterstained with DAPI (blue). View our protocol for [Fluorescent IHC Staining of Frozen Tissue Sections](#).

PREPARATION AND STORAGE

Reconstitution	Reconstitute at 0.2 mg/mL in sterile PBS.
Shipping	The product is shipped at ambient temperature. Upon receipt, store it immediately at the temperature recommended below. *Small pack size (-SP) is shipped with polar packs. Upon receipt, store it immediately at -20 to -70 °C
Stability & Storage	Use a manual defrost freezer and avoid repeated freeze-thaw cycles. <ul style="list-style-type: none"> ● 12 months from date of receipt, -20 to -70 °C as supplied. ● 1 month, 2 to 8 °C under sterile conditions after reconstitution. ● 6 months, -20 to -70 °C under sterile conditions after reconstitution.

BACKGROUND

Reg3B (regenerating islet-derived protein III beta; also PAP-I and HIP) is a secreted, 17 kDa member of the Reg gene family, C-type lectin gene superfamily. It is found in pancreatic acinar cells, intestinal enterocytes and developing spinal motoneurons. Reg3B may play a role in intestinal epithelial cell renewal. The mouse Reg3B precursor is 175 amino acids (aa) in length. It contains a 26 aa signal sequence plus a 149 aa mature region that possesses one C-type lectin domain (aa 38-173). Mature mouse Reg3B is 59%, 71% and 51% aa identical to the products of three other Reg3 named genes termed RegA, G, and D, respectively. Mature mouse Reg3B is also 91% and 67% aa identical to rat and human Reg3B, respectively.