

DESCRIPTION

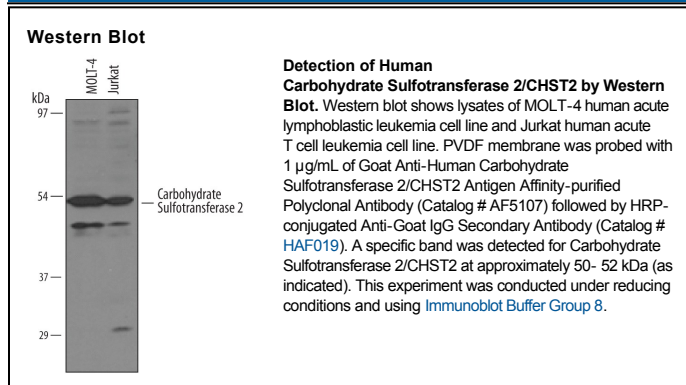
Species Reactivity	Human
Specificity	Detects human Carbohydrate Sulfotransferase 2/CHST2 in direct ELISAs and Western blots. In direct ELISAs and Western blots, less than 1% cross-reactivity with recombinant human (rh) CHST1, rhCHST5, and recombinant mouse CHST7 is observed.
Source	Polyclonal Goat IgG
Purification	Antigen Affinity-purified
Immunogen	Chinese hamster ovary cell line CHO-derived recombinant human CHST2 Tyr76-Leu530 Accession # Q9Y4C5
Formulation	Lyophilized from a 0.2 µm filtered solution in PBS with Trehalose. See Certificate of Analysis for details. *Small pack size (-SP) is supplied as a 0.2 µm filtered solution in PBS.

APPLICATIONS

Please Note: Optimal dilutions should be determined by each laboratory for each application. *General Protocols* are available in the *Technical Information* section on our website.

	Recommended Concentration	Sample
Western Blot	1 µg/mL	See Below
Immunoprecipitation	25 µg/mL	Conditioned cell culture medium spiked with Recombinant Human Carbohydrate Sulfotransferase 2/CHST2 (Catalog # 5107-ST), see our available Western blot detection antibodies

DATA



PREPARATION AND STORAGE

Reconstitution	Reconstitute at 0.2 mg/mL in sterile PBS.
Shipping	The product is shipped at ambient temperature. Upon receipt, store it immediately at the temperature recommended below. *Small pack size (-SP) is shipped with polar packs. Upon receipt, store it immediately at -20 to -70 °C
Stability & Storage	Use a manual defrost freezer and avoid repeated freeze-thaw cycles. <ul style="list-style-type: none"> • 12 months from date of receipt, -20 to -70 °C as supplied. • 1 month, 2 to 8 °C under sterile conditions after reconstitution. • 6 months, -20 to -70 °C under sterile conditions after reconstitution.

BACKGROUND

The CHST family is comprised of 14 genes in both human and mouse. All members of this family are Golgi-localized type II membrane proteins. Only the luminal and enzymatic domain is expressed in each of our recombinant CHST proteins. These enzymes transfer sulfate (i.e., sulfonate) onto the 6-O or 4-O positions of GalNAc, Gal and GlcNAc residues on glycoproteins, proteoglycans and glycolipids (1). This sulfation often creates specific epitopes that can be recognized by extracellular matrix proteins, cell surface receptors and viruses (2). Human CHST2, also known as N-acetylglucosamine-6-O-sulfotransferase 1 (GlcNAc6ST-1) and Gal/GalNAc/GlcNAc 6-O-sulfotransferase (GST-2), was previously shown to act on non-reducing GlcNAc residues (3). The enzyme is known to be involved in biosynthesis of L-selectin ligand sialyl 6-sulfo Lewis X (4) and therefore plays a role in lymphocyte homing (5).

References:

1. Hemmerich, S. and Rosen, S. (2000) *Glycobiology* **10**:849.
2. Bowman, K. G. and Bertozzi, C. R. (1999) *Chem. Biol.* **5**:447.
3. Sakaguchi, H. *et al.* (2000) *Biochim. Biophys. Acta* **1523**:269.
4. Uchimura, K. *et al.* (1998) *J. Biol. Chem.* **273**:22577.
5. Li, X. *et al.* (2001) *J. Leukoc. Biol.* **69**:565.
6. Robbins, P.W. (1962) *Methods in Enzymology*, Vol. V, Academic Press, Inc., New York, p.964.
7. MacRae, I.J. *et al.* (2000) *Biochemistry* **39**:1613.
8. Wu, Z.L. *et al.* (2002) *FASEB J.* **16**:539.