

DESCRIPTION

Species Reactivity	Human
Specificity	Detects human LRRC3 in direct ELISAs and Western blots. In direct ELISAs, approximately 5% cross-reactivity with recombinant human LRRC4 is observed.
Source	Polyclonal Sheep IgG
Purification	Antigen Affinity-purified
Immunogen	Mouse myeloma cell line NS0-derived recombinant human LRRC3 Cys33-Asp204 Accession # Q9BY71
Formulation	Lyophilized from a 0.2 µm filtered solution in PBS with Trehalose. See Certificate of Analysis for details. *Small pack size (-SP) is supplied either lyophilized or as a 0.2 µm filtered solution in PBS.

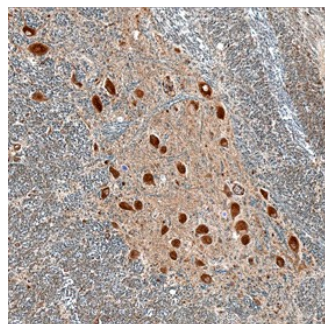
APPLICATIONS

Please Note: Optimal dilutions should be determined by each laboratory for each application. *General Protocols* are available in the *Technical Information* section on our website.

	Recommended Concentration	Sample
Western Blot	0.1 µg/mL	Recombinant Human LRRC3
Immunohistochemistry	5-15 µg/mL	See Below

DATA

Immunohistochemistry



LRRC3 in Human Brain. LRRC3 was detected in immersion fixed paraffin-embedded sections of human brain (medulla) using Sheep Anti-Human LRRC3 Antigen Affinity-purified Polyclonal Antibody (Catalog # AF5039) at 10 µg/mL overnight at 4 °C. Before incubation with the primary antibody, tissue was subjected to heat-induced epitope retrieval using Antigen Retrieval Reagent-Basic (Catalog # CTS013). Tissue was stained using the Anti-Sheep HRP-DAB Cell & Tissue Staining Kit (brown; Catalog # CTS019) and counter-stained with hematoxylin (blue). Specific staining was localized to neuronal cell bodies. View our protocol for [Chromogenic IHC Staining of Paraffin-embedded Tissue Sections](#).

PREPARATION AND STORAGE

Reconstitution	Reconstitute at 0.2 mg/mL in sterile PBS.
Shipping	The product is shipped at ambient temperature. Upon receipt, store it immediately at the temperature recommended below. *Small pack size (-SP) is shipped with polar packs. Upon receipt, store it immediately at -20 to -70 °C
Stability & Storage	Use a manual defrost freezer and avoid repeated freeze-thaw cycles. <ul style="list-style-type: none"> • 12 months from date of receipt, -20 to -70 °C as supplied. • 1 month, 2 to 8 °C under sterile conditions after reconstitution. • 6 months, -20 to -70 °C under sterile conditions after reconstitution.

BACKGROUND

LRRC3 (Leu-rich repeat/LRR-containing protein 3) is a 25 kDa (predicted) member of the Leu-rich repeat protein superfamily. Little is known about the protein except for the fact that it shows widespread expression. Human LRRC3 is a protein that is 225 amino acids (aa) in length. It contains three LRRs between aa 63-86, aa 87-110 and aa 112-135. There is one potential splice variant that shows a deletion of aa 129-248. Over aa 33-204, human LRRC3 is 83% and 81% aa identical to mouse and canine LRRC3, respectively.