

#### DESCRIPTION

<b>Species Reactivity</b>	Human
<b>Specificity</b>	Detects human LRRC4 in direct ELISAs and Western blots. In direct ELISAs and Western blots, approximately 5% cross-reactivity with recombinant human LRRC3 is observed.
<b>Source</b>	Polyclonal Sheep IgG
<b>Purification</b>	Antigen Affinity-purified
<b>Immunogen</b>	Chinese hamster ovary cell line CHO-derived recombinant human LRRC4 Ala39-Lys527 Accession # Q9HBW1
<b>Formulation</b>	Lyophilized from a 0.2 µm filtered solution in PBS with Trehalose. See Certificate of Analysis for details. *Small pack size (-SP) is supplied as a 0.2 µm filtered solution in PBS.

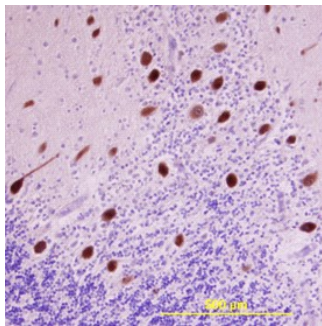
#### APPLICATIONS

**Please Note:** Optimal dilutions should be determined by each laboratory for each application. *General Protocols* are available in the *Technical Information* section on our website.

	<b>Recommended Concentration</b>	<b>Sample</b>
<b>Western Blot</b>	0.1 µg/mL	Recombinant Human LRRC4
<b>Immunohistochemistry</b>	5-15 µg/mL	See Below

#### DATA

##### Immunohistochemistry



**LRRC4 in Human Brain.** LRRC4 was detected in immersion fixed paraffin-embedded sections of human brain (cerebellum) using 15 µg/mL Sheep Anti-Human LRRC4 Antigen Affinity-purified Polyclonal Antibody (Catalog # AF4995) overnight at 4 °C. Tissue was stained with the Anti-Sheep HRP-DAB Cell & Tissue Staining Kit (brown; Catalog # CTS019) and counterstained with hematoxylin (blue). View our protocol for [Chromogenic IHC Staining of Paraffin-embedded Tissue Sections](#).

#### PREPARATION AND STORAGE

<b>Reconstitution</b>	Reconstitute at 0.2 mg/mL in sterile PBS.
<b>Shipping</b>	The product is shipped at ambient temperature. Upon receipt, store it immediately at the temperature recommended below. *Small pack size (-SP) is shipped with polar packs. Upon receipt, store it immediately at -20 to -70 °C
<b>Stability &amp; Storage</b>	<b>Use a manual defrost freezer and avoid repeated freeze-thaw cycles.</b> <ul style="list-style-type: none"> <li>● 12 months from date of receipt, -20 to -70 °C as supplied.</li> <li>● 1 month, 2 to 8 °C under sterile conditions after reconstitution.</li> <li>● 6 months, -20 to -70 °C under sterile conditions after reconstitution.</li> </ul>

#### BACKGROUND

LRRC4 (Leu-rich repeat/LRR-containing protein 4; also brain tumor-associated protein) is a 55 kDa (predicted) member of the Leu-rich protein family. It is expressed on neurons and astrocytes, and antagonizes the signaling pathways for cytokines and growth factors. It is reduced in expression in tumors. Human LRRC4 is a type I transmembrane protein that is 653 amino acids (aa) in length. It contains a 489 aa extracellular region (aa 39-527), and a 105 aa cytoplasmic domain. The extracellular region shows nine LRRs (aa 74-288), a C2 type Ig-like domain (aa 354-440), and a Thr rich segment (aa 455-526). Over aa 39-527, human LRRC4 is 98% aa identical to both mouse and canine LRRC4, respectively.