

## DESCRIPTION

<b>Species Reactivity</b>	Mouse
<b>Specificity</b>	Detects mouse SEZ6/BSRP-C in direct ELISAs and Western blots. In direct ELISAs and Western blots, less than 10% cross-reactivity with recombinant mouse (rm) BSRP-A and rmBSRP-B is observed.
<b>Source</b>	Polyclonal Sheep IgG
<b>Purification</b>	Antigen Affinity-purified
<b>Immunogen</b>	Mouse myeloma cell line NS0-derived recombinant mouse SEZ6/BSRP-C Gly19-Asn902 Accession # Q7TSK2
<b>Formulation</b>	Lyophilized from a 0.2 µm filtered solution in PBS with Trehalose. See Certificate of Analysis for details. *Small pack size (-SP) is supplied as a 0.2 µm filtered solution in PBS.

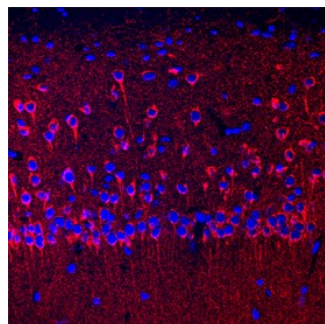
## APPLICATIONS

**Please Note:** Optimal dilutions should be determined by each laboratory for each application. [General Protocols](#) are available in the [Technical Information](#) section on our website.

	Recommended Concentration	Sample
<b>Western Blot</b>	0.1 µg/mL	Recombinant Mouse SEZ6/BSRP-C
<b>Immunohistochemistry</b>	5-15 µg/mL	See Below

## DATA

### Immunohistochemistry



**SEZ6/BSRP-C in Mouse Brain.**  
SEZ6/BSRP-C was detected in perfusion fixed frozen sections of mouse brain (hippocampus) using Sheep Anti-Mouse SEZ6/BSRP-C Antigen Affinity-purified Polyclonal Antibody (Catalog # AF4989) at 10 µg/mL overnight at 4 °C. Tissue was stained using the NorthernLights™ 557-conjugated Anti-Sheep IgG Secondary Antibody (red; Catalog # NL010) and counterstained with DAPI (blue). Specific staining was localized to neuronal cell bodies, processes, and synaptic puncta. View our protocol for [Fluorescent IHC Staining of Frozen Tissue Sections](#).

## PREPARATION AND STORAGE

<b>Reconstitution</b>	Reconstitute at 0.2 mg/mL in sterile PBS.
<b>Shipping</b>	The product is shipped at ambient temperature. Upon receipt, store it immediately at the temperature recommended below. *Small pack size (-SP) is shipped with polar packs. Upon receipt, store it immediately at -20 to -70 °C
<b>Stability &amp; Storage</b>	<b>Use a manual defrost freezer and avoid repeated freeze-thaw cycles.</b> <ul style="list-style-type: none"> <li>● 12 months from date of receipt, -20 to -70 °C as supplied.</li> <li>● 1 month, 2 to 8 °C under sterile conditions after reconstitution.</li> <li>● 6 months, -20 to -70 °C under sterile conditions after reconstitution.</li> </ul>

## BACKGROUND

SEZ6 (Seizure protein 6, also BSRP-C, Brain-specific receptor-like protein C) is a 150 kDa member of the BSRP family of proteins. It is expressed on neurons and exerts an antibranching effect relative to neurite extension. Mature mouse SEZ6 is a 974 amino acid (aa) type I transmembrane glycoprotein. It contains an extracellular domain (ECD) of at least 876 amino acids (aa 18-893). The ECD shows three CUB domains and five short consensus repeats (SCRs). There are two splice variants for SEZ6. One is soluble, and shows an 18 aa substitution for aa 588-991, while a second shows a deletion of aa 895-907 plus a 9 aa substitution for aa 982-991. Over aa 19-902, mouse SEZ6 is 91% aa identical to human SEZ6.