

DESCRIPTION

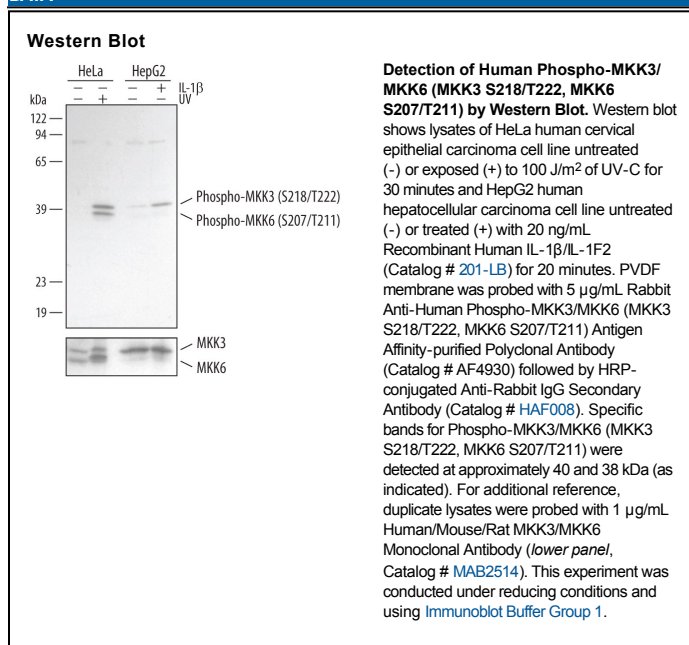
Species Reactivity	Human
Specificity	Detects human Phospho-MKK3/MKK6 (MKK3 S218/T222, MKK6 S207/T211) in Western blots.
Source	Polyclonal Rabbit IgG
Purification	Antigen Affinity-purified
Immunogen	Phosphopeptide containing human MKK6 S207/T211 site
Formulation	Lyophilized from a 0.2 µm filtered solution in PBS with Trehalose. See Certificate of Analysis for details. *Small pack size (-SP) is supplied as a 0.2 µm filtered solution in PBS.

APPLICATIONS

Please Note: Optimal dilutions should be determined by each laboratory for each application. [General Protocols](#) are available in the [Technical Information](#) section on our website.

	Recommended Concentration	Sample
Western Blot	5 µg/mL	See Below

DATA



PREPARATION AND STORAGE

Reconstitution	Reconstitute at 0.2 mg/mL in sterile PBS.
Shipping	The product is shipped at ambient temperature. Upon receipt, store it immediately at the temperature recommended below. *Small pack size (-SP) is shipped with polar packs. Upon receipt, store it immediately at -20 to -70 °C
Stability & Storage	Use a manual defrost freezer and avoid repeated freeze-thaw cycles. <ul style="list-style-type: none"> • 12 months from date of receipt, -20 to -70 °C as supplied. • 1 month, 2 to 8 °C under sterile conditions after reconstitution. • 6 months, -20 to -70 °C under sterile conditions after reconstitution.

BACKGROUND

Mitogen-activated protein kinase kinase 3 (MKK3) and the closely related MKK6 are activated by proinflammatory cytokines and environmental stresses. Activation occurs through dual phosphorylation at S218/T222 of MKK3 and S207/T211 of MKK6 by several upstream MAP3Ks, including ASK1 and TAK1. Both MKK3 and MKK6 are dual-specificity protein kinases, phosphorylating and activating the p38 MAP kinases at T and Y positions within the phosphoacceptor sequence T-G-Y.