

DESCRIPTION

Species Reactivity	Human/Mouse
Specificity	Detects human and mouse LRRTM3 in direct ELISAs and Western blots. In direct ELISA, approximately 25% cross-reactivity with recombinant human (rh) LRRTM4, and less than 5% cross-reactivity with rhLRRTM1 and rhLRRTM2 is observed.
Source	Polyclonal Sheep IgG
Purification	Antigen Affinity-purified
Immunogen	Mouse myeloma cell line NS0-derived recombinant human LRRTM3 Glu31-Lys419 Accession # Q86VH5
Endotoxin Level	<2.5 EU per 1 µg of the antibody by the LAL method.
Formulation	Lyophilized from a 0.2 µm filtered solution in PBS with Trehalose. See Certificate of Analysis for details. *Small pack size (-SP) is supplied either lyophilized or as a 0.2 µm filtered solution in PBS.

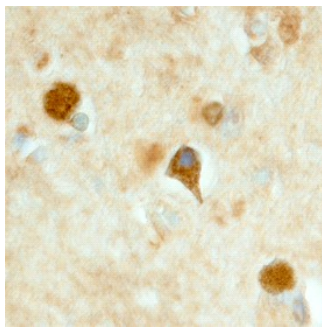
APPLICATIONS

Please Note: Optimal dilutions should be determined by each laboratory for each application. [General Protocols](#) are available in the [Technical Information](#) section on our website.

	Recommended Concentration	Sample
Western Blot	0.1 µg/mL	Recombinant Human LRRTM3 (Catalog # 4898-LR)
Immunohistochemistry	5-15 µg/mL	See Below

DATA

Immunohistochemistry



LRRTM3 in Human Hippocampus.
LRRTM3 was detected in immersion fixed frozen sections of human hippocampus using Human LRRTM3 Antigen Affinity-purified Polyclonal Antibody (Catalog # AF4898) at 15 µg/mL overnight at 4 °C. Tissue was stained using the Anti-Sheep HRP-DAB Cell & Tissue Staining Kit (brown; Catalog # CTS019) and counterstained with hematoxylin (blue). Specific staining was localized to neurons. View our protocol for [Chromogenic IHC Staining of Frozen Tissue Sections](#).

PREPARATION AND STORAGE

Reconstitution	Reconstitute at 0.2 mg/mL in sterile PBS.
Shipping	The product is shipped at ambient temperature. Upon receipt, store it immediately at the temperature recommended below. *Small pack size (-SP) is shipped with polar packs. Upon receipt, store it immediately at -20 to -70 °C
Stability & Storage	Use a manual defrost freezer and avoid repeated freeze-thaw cycles. <ul style="list-style-type: none"> ● 12 months from date of receipt, -20 to -70 °C as supplied. ● 1 month, 2 to 8 °C under sterile conditions after reconstitution. ● 6 months, -20 to -70 °C under sterile conditions after reconstitution.

BACKGROUND

Human LRRTM3 (leucine-rich repeat transmembrane neuronal 3) is a 63 kDa (predicted) type I transmembrane protein, and one of four members of the LRRTM family of proteins within the leucine-rich repeat (LRR) superfamily (1). There are two isoforms of LRRTM3. Isoform 1 is synthesized as a precursor with a 30 amino acid (aa) signal sequence, a 389 aa extracellular region, a 21 aa transmembrane region, and a 141 aa cytoplasmic region. In isoform 2, aa 513 is changed from isoleucine to valine, and aa 514 to 581 are missing, producing a cytoplasmic region of only 74 aa. The extracellular region of both isoforms contains one N-linked glycosylation site, a leucine-rich repeat N-terminal domain bordered by four conserved cysteines, and 10 LRRs flanked by cysteine-rich domains (1). The cytoplasmic region of both isoforms contains several tyrosine, serine, and threonine residues that have the potential to be phosphorylated, and thus to be involved in signal transduction (1). The C-terminal of isoform 2 also contains a conserved glutamic acid-cysteine-glutamic acid-valine sequence for potential interaction with PDZ proteins (1, 2). Mature human LRRTM3 (isoform 1) is 98% identical to mouse LRRTM3. In the mouse, beginning at 8.5 *dpc*, strong levels of LRRTM3 can be detected in the neural progenitors of the neural plate that will develop into the rostral neural tube, the forebrain, a stripe in the hindbrain, and the region of the presomitic mesoderm/somite boundary (2). By 15 *dpc*, LRRTM3 is expressed broadly and accumulates thereafter (3). In the adult, LRRTM3 is expressed almost exclusively in the brain with high expression in the cortical laminae and dentate gyrus, as well as detectable levels in the hypothalamus and amygdala (3). Functionally, LRRTM3 may be involved in the formation of the CNS and maintenance of CNS structure and function in the adult brain (1). In addition, LRRTM3 has been shown to promote processing of amyloid-precursor protein by BACE1, and is a positional candidate gene for late-onset Alzheimer's disease (3).

References:

1. Lauren, J. *et al.* (2003) *Genomics* **81**:411.
2. Haines, B.P. and P.W.J. Rigby (2007) *Gene Expr. Patterns* **7**:23.
3. Majercak, J. *et al.* (2006) *Proc. Natl. Acad. U.S.A.* **103**:17967.