

**DESCRIPTION**

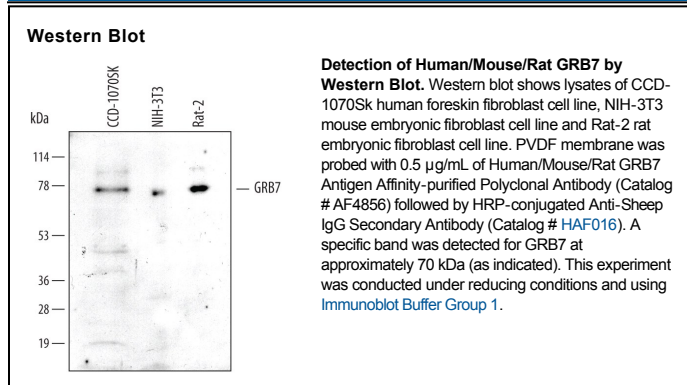
<b>Species Reactivity</b>	Human/Mouse/Rat
<b>Specificity</b>	Detects endogenous human, mouse, and rat GRB7 in Western blots.
<b>Source</b>	Polyclonal Sheep IgG
<b>Purification</b>	Antigen Affinity-purified
<b>Immunogen</b>	<i>E. coli</i> -derived recombinant human GRB7 Met130-Tyr274 Accession # Q14451
<b>Formulation</b>	Lyophilized from a 0.2 µm filtered solution in PBS with Trehalose. See Certificate of Analysis for details. *Small pack size (-SP) is supplied as a 0.2 µm filtered solution in PBS.

**APPLICATIONS**

**Please Note:** Optimal dilutions should be determined by each laboratory for each application. *General Protocols* are available in the *Technical Information* section on our website.

	<b>Recommended Concentration</b>	<b>Sample</b>
<b>Western Blot</b>	0.5 µg/mL	See Below

**DATA**



**PREPARATION AND STORAGE**

<b>Reconstitution</b>	Reconstitute at 0.2 mg/mL in sterile PBS.
<b>Shipping</b>	The product is shipped at ambient temperature. Upon receipt, store it immediately at the temperature recommended below. *Small pack size (-SP) is shipped with polar packs. Upon receipt, store it immediately at -20 to -70 °C
<b>Stability &amp; Storage</b>	<b>Use a manual defrost freezer and avoid repeated freeze-thaw cycles.</b> <ul style="list-style-type: none"> <li>• 12 months from date of receipt, -20 to -70 °C as supplied.</li> <li>• 1 month, 2 to 8 °C under sterile conditions after reconstitution.</li> <li>• 6 months, -20 to -70 °C under sterile conditions after reconstitution.</li> </ul>

**BACKGROUND**

GRB7 (Growth factor receptor-bound protein 7) mediates the coupling of multiple cell surface receptors to downstream signaling pathways in the regulation of various cellular functions, such as proliferation, apoptosis, and cell migration. GRB7 protein consists of several distinctive structural features, including an amino-terminal proline-rich region, a central GM region (for Grb and Mig), and a carboxyl-terminal SH2 domain. GRB7 is phosphorylated by focal adhesion kinase at cell adhesion sites.