

DESCRIPTION

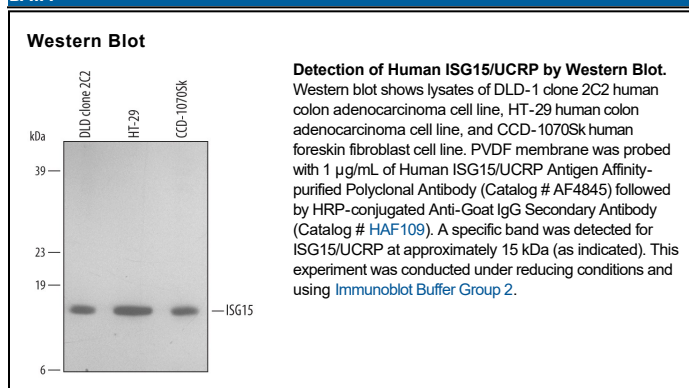
Species Reactivity	Human
Specificity	Detects endogenous human ISG15 in Western blots.
Source	Polyclonal Goat IgG
Purification	Antigen Affinity-purified
Immunogen	<i>E. coli</i> -derived recombinant human ISG15 Gly2-Gly157 Accession # ABW03539
Formulation	Lyophilized from a 0.2 µm filtered solution in PBS with Trehalose. See Certificate of Analysis for details. *Small pack size (-SP) is supplied either lyophilized or as a 0.2 µm filtered solution in PBS.

APPLICATIONS

Please Note: Optimal dilutions should be determined by each laboratory for each application. [General Protocols](#) are available in the Technical Information section on our website.

	Recommended Concentration	Sample
Western Blot	1 µg/mL	See Below

DATA



PREPARATION AND STORAGE

Reconstitution	Reconstitute at 0.2 mg/mL in sterile PBS.
Shipping	The product is shipped at ambient temperature. Upon receipt, store it immediately at the temperature recommended below. *Small pack size (-SP) is shipped with polar packs. Upon receipt, store it immediately at -20 to -70 °C
Stability & Storage	Use a manual defrost freezer and avoid repeated freeze-thaw cycles. <ul style="list-style-type: none"> 12 months from date of receipt, -20 to -70 °C as supplied. 1 month, 2 to 8 °C under sterile conditions after reconstitution. 6 months, -20 to -70 °C under sterile conditions after reconstitution.

BACKGROUND

ISG15 (interferon-induced 15 kDa protein; also IP17) is a 15 kDa ubiquitin family protein that is expressed by a wide variety of cell types. ISG15 is induced by type I IFN, and like ubiquitin, becomes conjugated to intracellular proteins. Unlike ubiquitin, it does not target proteins for degradation, instead, it is part of the anti-virus response. Human proISG15 is 165 amino acids (aa) in length. There are two ubiquitin-like domains (aa 2-78 and 79-157) and a propeptide (aa 15-165) that is cleaved intracellularly. Select blood mononuclear cells secrete mature ISG15, which is chemotactic for neutrophils. Mature human ISG15 is 66% aa identical to mouse ISG15.