

DESCRIPTION

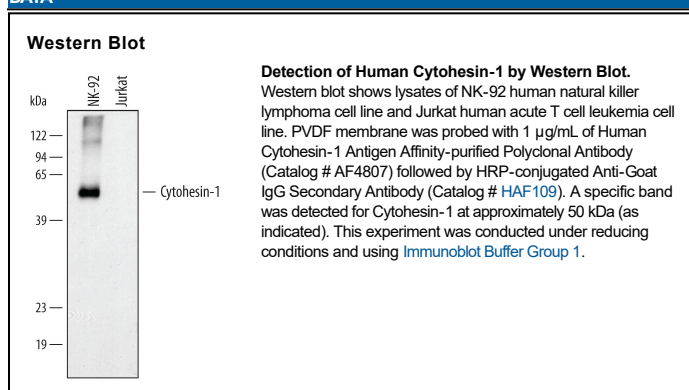
Species Reactivity	Human
Specificity	Detects endogenous human Cytohesin-1 in Western blots.
Source	Polyclonal Goat IgG
Purification	Antigen Affinity-purified
Immunogen	<i>E. coli</i> -derived recombinant human Cytohesin-1 Met1-Tyr102 Accession # Q15438
Formulation	Lyophilized from a 0.2 µm filtered solution in PBS with Trehalose. See Certificate of Analysis for details. *Small pack size (-SP) is supplied either lyophilized or as a 0.2 µm filtered solution in PBS.

APPLICATIONS

Please Note: Optimal dilutions should be determined by each laboratory for each application. [General Protocols](#) are available in the Technical Information section on our website.

	Recommended Concentration	Sample
Western Blot	1 µg/mL	See Below

DATA



PREPARATION AND STORAGE

Reconstitution	Reconstitute at 0.2 mg/mL in sterile PBS.
Shipping	The product is shipped at ambient temperature. Upon receipt, store it immediately at the temperature recommended below. *Small pack size (-SP) is shipped with polar packs. Upon receipt, store it immediately at -20 to -70 °C
Stability & Storage	Use a manual defrost freezer and avoid repeated freeze-thaw cycles. <ul style="list-style-type: none"> • 12 months from date of receipt, -20 to -70 °C as supplied. • 1 month, 2 to 8 °C under sterile conditions after reconstitution. • 6 months, -20 to -70 °C under sterile conditions after reconstitution.

BACKGROUND

Cytohesin-1, previously called B2-1 or PSCD1 (pleckstrin homology, Sec7 and coiled-coil domain-containing protein 1), is a 398 amino acid (aa), 47 kDa member of the cytohesin family of guanine nucleotide exchange factors. The Sec7 domain (aa 62-244) binds the integrin beta 2 subunit cytoplasmic domain, activating integrins via inside-out signaling, thus implicated in chemotaxis, adhesion, and cell spreading. The region of human Cytohesin-1 used as an immunogen shares 97% and 96% aa identity with mouse and rat Cytohesin-1, and 67% and 69% aa identity with human cytohesins 2 and 3, respectively. Although ubiquitously expressed, Cytohesin-1 is primarily found in immune system cells, and was cloned from a natural killer (NK) cell minus T helper cell line Jurkat library.