

DESCRIPTION

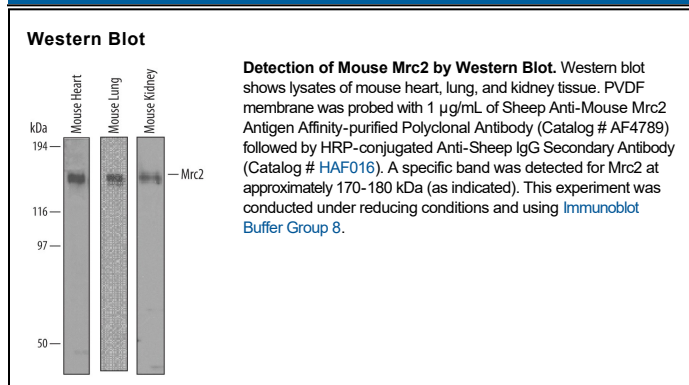
Species Reactivity	Mouse
Specificity	Detects mouse Mrc2 in direct ELISAs and Western blots. In direct ELISAs and Western blots, approximately 25% cross-reactivity with recombinant human Mrc2 is observed.
Source	Polyclonal Sheep IgG
Purification	Antigen Affinity-purified
Immunogen	Mouse myeloma cell line NS0-derived recombinant mouse Mrc2 Ala31-Ala1413 Accession # AAI16643
Formulation	Lyophilized from a 0.2 µm filtered solution in PBS with Trehalose. See Certificate of Analysis for details. *Small pack size (-SP) is supplied either lyophilized or as a 0.2 µm filtered solution in PBS.

APPLICATIONS

Please Note: Optimal dilutions should be determined by each laboratory for each application. [General Protocols](#) are available in the Technical Information section on our website.

	Recommended Concentration	Sample
Western Blot	1 µg/mL	See Below

DATA



PREPARATION AND STORAGE

Reconstitution	Reconstitute at 0.2 mg/mL in sterile PBS.
Shipping	The product is shipped at ambient temperature. Upon receipt, store it immediately at the temperature recommended below. *Small pack size (-SP) is shipped with polar packs. Upon receipt, store it immediately at -20 to -70 °C
Stability & Storage	Use a manual defrost freezer and avoid repeated freeze-thaw cycles. <ul style="list-style-type: none"> 12 months from date of receipt, -20 to -70 °C as supplied. 1 month, 2 to 8 °C under sterile conditions after reconstitution. 6 months, -20 to -70 °C under sterile conditions after reconstitution.

BACKGROUND

Mrc2 (macrophage mannose receptor 2; also uPARAP/Endo180) is a 180 kDa member of the mannose receptor family. It is found on fibroblasts, macrophages and endothelial cells. Mrc2 binds and internalizes glycoproteins plus collagen types I and IV. Mouse Mrc2 is a type I transmembrane glycoprotein that is 1479 amino acids (aa) in length. It possesses a 1383 aa extracellular domain (ECD) (aa 31-1479) and a short 45 aa cytoplasmic tail. The ECD contains eight C-type lectin domains plus one fibronectin type II domain (aa 181-229) that binds collagen. There are two splice variants, one which shows an eight aa substitution for aa 173-1479, and a second that shows a 72 aa substitution for aa 982-1479. Over aa 311-413, mouse Mrc2 shares 91% and 97% aa identity with human and rat Mrc2, respectively.