

## DESCRIPTION

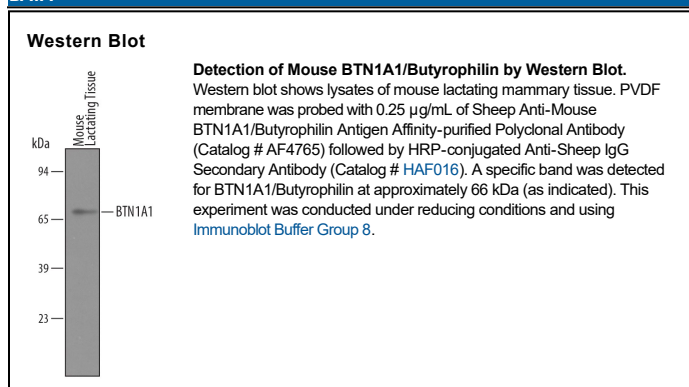
<b>Species Reactivity</b>	Mouse
<b>Specificity</b>	Detects mouse BTN1A1/Butyrophilin in direct ELISAs and Western blots. In direct ELISAs, approximately 25% cross-reactivity with recombinant human BTN1A1/Butyrophilin is observed.
<b>Source</b>	Polyclonal Sheep IgG
<b>Purification</b>	Antigen Affinity-purified
<b>Immunogen</b>	Mouse myeloma cell line NS0-derived recombinant mouse BTN1A1/Butyrophilin Ala27-Trp247 Accession # Q62556
<b>Formulation</b>	Lyophilized from a 0.2 µm filtered solution in PBS with Trehalose. See Certificate of Analysis for details. *Small pack size (-SP) is supplied either lyophilized or as a 0.2 µm filtered solution in PBS.

## APPLICATIONS

**Please Note:** Optimal dilutions should be determined by each laboratory for each application. [General Protocols](#) are available in the Technical Information section on our website.

	<b>Recommended Concentration</b>	<b>Sample</b>
<b>Western Blot</b>	0.25 µg/mL	See Below

## DATA



## PREPARATION AND STORAGE

<b>Reconstitution</b>	Reconstitute at 0.2 mg/mL in sterile PBS.
<b>Shipping</b>	The product is shipped at ambient temperature. Upon receipt, store it immediately at the temperature recommended below. *Small pack size (-SP) is shipped with polar packs. Upon receipt, store it immediately at -20 to -70 °C
<b>Stability &amp; Storage</b>	<b>Use a manual defrost freezer and avoid repeated freeze-thaw cycles.</b> <ul style="list-style-type: none"> <li>12 months from date of receipt, -20 to -70 °C as supplied.</li> <li>1 month, 2 to 8 °C under sterile conditions after reconstitution.</li> <li>6 months, -20 to -70 °C under sterile conditions after reconstitution.</li> </ul>

## BACKGROUND

Butyrophilin (Greek for "being like butter"; also Btn1a1) is a 66 kDa member of the BTN/MOG family of proteins. It is expressed on secretory mammary epithelium and associates with xanthine dehydrogenase. This is necessary for milk-lipid droplet secretion. Mature mouse Butyrophilin is 498 amino acids (aa) in length. It is a type I transmembrane glycoprotein that contains a 221 aa extracellular domain (ECD) (aa 27-247) and a 256 aa cytoplasmic region. The ECD contains two V-type Ig-like domains (aa 29-141 and aa 149-235). There are two potential splice variants. One shows a deletion of aa 145-238, while a second shows a 36 aa substitution for aa 144-524. Over aa 27-247, mouse Butyrophilin shares 85% and 67% aa identity with rat and human Butyrophilin, respectively.