

#### DESCRIPTION

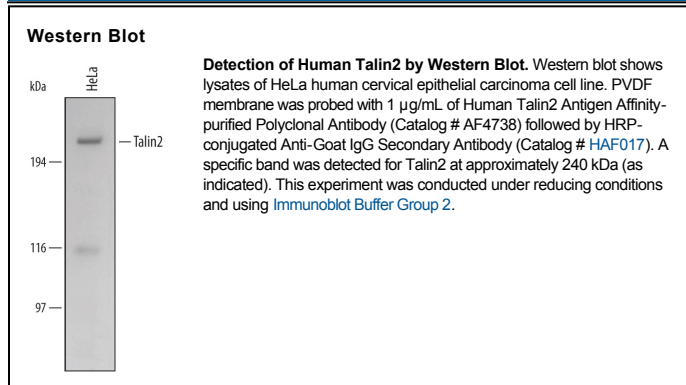
<b>Species Reactivity</b>	Human
<b>Specificity</b>	Detects endogenous human Talin2 in Western blots. In Western blots, no cross-reactivity to recombinant human Talin1 was detected.
<b>Source</b>	Polyclonal Goat IgG
<b>Purification</b>	Antigen Affinity-purified
<b>Immunogen</b>	<i>E. coli</i> -derived recombinant human Talin2 Ala977-Arg1183 Accession # Q9Y4G6
<b>Formulation</b>	Lyophilized from a 0.2 µm filtered solution in PBS with Trehalose. See Certificate of Analysis for details. *Small pack size (-SP) is supplied as a 0.2 µm filtered solution in PBS.

#### APPLICATIONS

**Please Note:** Optimal dilutions should be determined by each laboratory for each application. *General Protocols* are available in the *Technical Information* section on our website.

	<b>Recommended Concentration</b>	<b>Sample</b>
<b>Western Blot</b>	1 µg/mL	See Below

#### DATA



#### PREPARATION AND STORAGE

<b>Reconstitution</b>	Reconstitute at 0.2 mg/mL in sterile PBS.
<b>Shipping</b>	The product is shipped at ambient temperature. Upon receipt, store it immediately at the temperature recommended below. *Small pack size (-SP) is shipped with polar packs. Upon receipt, store it immediately at -20 to -70 °C
<b>Stability &amp; Storage</b>	<b>Use a manual defrost freezer and avoid repeated freeze-thaw cycles.</b> <ul style="list-style-type: none"> <li>● 12 months from date of receipt, -20 to -70 °C as supplied.</li> <li>● 1 month, 2 to 8 °C under sterile conditions after reconstitution.</li> <li>● 6 months, -20 to -70 °C under sterile conditions after reconstitution.</li> </ul>

#### BACKGROUND

Talin2 (*talus*; Latin for ankle, the shape of a focal adhesion plaque complex) is a 240 kDa cytoplasmic focal adhesion molecule. It likely forms dimers that link integrins to the actin cytoskeleton. Human Talin2 is 2542 amino acids (aa) in length. It contains one globular N-terminal FERM domain that binds integrin cytodomains (aa 88-406), followed by an Ala-rich region (aa 861-1193) and a C-terminal actin-binding domain (aa 2321-2530). Human Talin2 has three potential variants. Two show alternate start sites at Met19 and Met1153, while a third has an alternate start site at Met1608 accompanied by a deletion of aa 1748-1790. Over aa's 977-1183, human Talin2 shares 99% and 97% aa identity with canine and mouse Talin2, respectively.