

DESCRIPTION

Species Reactivity	Human
Specificity	Detects human mGluR3 in direct ELISAs and Western blots. In direct ELISAs and Western blots, less than 10% cross-reactivity with recombinant human (rh) mGluR2, rhmGluR4, rhmGluR8 is observed, and less than 1% cross-reactivity with rhmGluR1, rhmGluR5, and rhmGluR7 is observed.
Source	Polyclonal Sheep IgG
Purification	Antigen Affinity-purified
Immunogen	Chinese hamster ovary cell line CHO-derived recombinant human mGluR3 Asp25-Ser507 Accession # Q14832
Formulation	Lyophilized from a 0.2 µm filtered solution in PBS with Trehalose. See Certificate of Analysis for details. *Small pack size (-SP) is supplied as a 0.2 µm filtered solution in PBS.

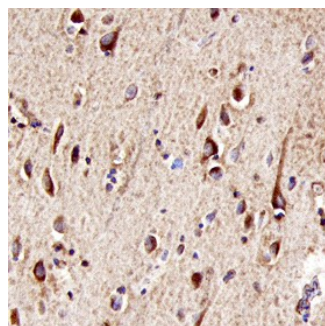
APPLICATIONS

Please Note: Optimal dilutions should be determined by each laboratory for each application. *General Protocols* are available in the *Technical Information* section on our website.

	Recommended Concentration	Sample
Western Blot	0.1 µg/mL	Recombinant Human mGluR3
Immunohistochemistry	5-15 µg/mL	See Below

DATA

Immunohistochemistry



mGluR3 in Human Brain. mGluR3 was detected in immersion fixed paraffin-embedded sections of human brain (caudate nucleus) using Sheep Anti-Human mGluR3 Antigen Affinity-purified Polyclonal Antibody (Catalog # AF4668) at 10 µg/mL overnight at 4 °C. Tissue was stained using the Anti-Sheep HRP-DAB Cell & Tissue Staining Kit (brown; Catalog # CTS019) and counterstained with hematoxylin (blue). Specific labeling was localized to the plasma membrane and cytoplasm of neurons. View our protocol for [Chromogenic IHC Staining of Paraffin-embedded Tissue Sections](#).

PREPARATION AND STORAGE

Reconstitution	Reconstitute at 0.2 mg/mL in sterile PBS.
Shipping	The product is shipped at ambient temperature. Upon receipt, store it immediately at the temperature recommended below. *Small pack size (-SP) is shipped with polar packs. Upon receipt, store it immediately at -20 to -70 °C
Stability & Storage	Use a manual defrost freezer and avoid repeated freeze-thaw cycles. <ul style="list-style-type: none"> ● 12 months from date of receipt, -20 to -70 °C as supplied. ● 1 month, 2 to 8 °C under sterile conditions after reconstitution. ● 6 months, -20 to -70 °C under sterile conditions after reconstitution.

BACKGROUND

Metabotropic glutamate receptor 3 (mGluR3) is a 90-100 kDa, 7-transmembrane glycoprotein that belongs to group II of the C-family of G-protein coupled receptors. It is a presynaptic receptor expressed on both neurons and glia, whose activation reduces adenylate cyclase activity. Mature human mGluR3 is 857 amino acids in length and contains a 554 amino acid (aa) N-terminal extracellular domain (ECD) (aa 23-576). The ECD binds glutamate and forms homodimers. There is one alternative splice form that is soluble, 515 aa in length and shows a 96 aa substitution for aa 442-879. Over aa 25-507, human mGluR3 shares 97% aa sequence identity with mouse and rat mGluR3 and 67% aa sequence identity with hGluR2.