

## DESCRIPTION

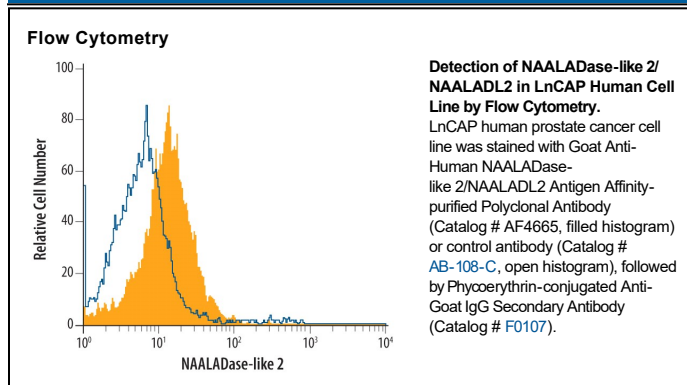
<b>Species Reactivity</b>	Human
<b>Specificity</b>	Detects human NAALADase-like 2/NAALADL2 in direct ELISAs and Western blots. In direct ELISAs and Western blots, less than 5% cross-reactivity with recombinant mouse NAALADase 2 is observed.
<b>Source</b>	Polyclonal Goat IgG
<b>Purification</b>	Antigen Affinity-purified
<b>Immunogen</b>	Mouse myeloma cell line NS0-derived recombinant human NAALADase-like 2/NAALADL2 Ser152-Asn795 (Met194Thr) Accession # CAE75743
<b>Formulation</b>	Lyophilized from a 0.2 µm filtered solution in PBS with Trehalose. See Certificate of Analysis for details. *Small pack size (-SP) is supplied either lyophilized or as a 0.2 µm filtered solution in PBS.

## APPLICATIONS

**Please Note:** Optimal dilutions should be determined by each laboratory for each application. *General Protocols* are available in the *Technical Information* section on our website.

	Recommended Concentration	Sample
<b>Western Blot</b>	0.1 µg/mL	Recombinant Human NAALADase-like 2/NAALADL2
<b>Flow Cytometry</b>	2.5 µg/10 <sup>6</sup> cells	See Below
<b>Immunocytochemistry</b>	5-15 µg/mL	Immersion fixed PC-3 human prostate cancer cell line
<b>Immunoprecipitation</b>	25 µg/mL	Conditioned cell culture medium spiked with Recombinant Human NAALADase-like 2/NAALADL2, <a href="#">see our available Western blot detection antibodies</a>
<b>CyTOF-ready</b>		Ready to be labeled using established conjugation methods. No BSA or other carrier proteins that could interfere with conjugation.

## DATA



## PREPARATION AND STORAGE

<b>Reconstitution</b>	Reconstitute at 0.2 mg/mL in sterile PBS.
<b>Shipping</b>	The product is shipped at ambient temperature. Upon receipt, store it immediately at the temperature recommended below. *Small pack size (-SP) is shipped with polar packs. Upon receipt, store it immediately at -20 to -70 °C
<b>Stability &amp; Storage</b>	<b>Use a manual defrost freezer and avoid repeated freeze-thaw cycles.</b> <ul style="list-style-type: none"> <li>• 12 months from date of receipt, -20 to -70 °C as supplied.</li> <li>• 1 month, 2 to 8 °C under sterile conditions after reconstitution.</li> <li>• 6 months, -20 to -70 °C under sterile conditions after reconstitution.</li> </ul>

## BACKGROUND

NAALADL2 (N-acetylated α-linked acidic dipeptidase like 2) is a member of the peptidase M28 family of enzymes. It is presumably a type II transmembrane (TM) protein that may have O-glycosyl hydrolase activity. Human NAALADL2 is 795 amino acids (aa) in length. It is believed to contain a cytoplasmic and TM segment at the N-terminus, followed by a peptidase domain (aa 444-596) and a TfR-like dimerization region (aa 688-777). There are multiple splice forms. One shows a 4 aa substitution for aa 292-795, a second shows an alternate start site at Met18 with a 24 aa substitution for aa 314-795, and a third contains an alternate start site at Met283, accompanied by a deletion of aa 363-411 and 633-795. Over aa 152-795, human NAALADL2 is 87% and 82% aa identical to mouse and canine NAALADL2, respectively.