

DESCRIPTION

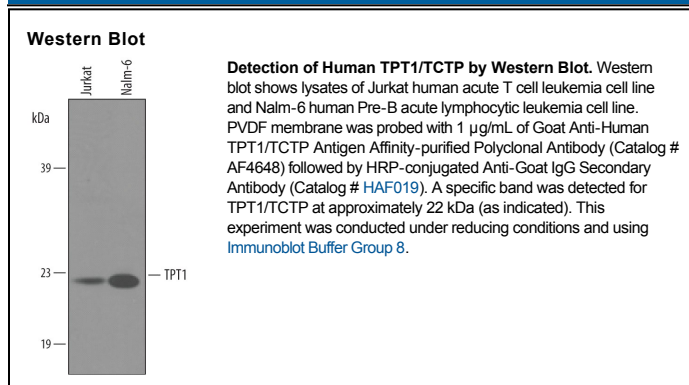
Species Reactivity	Human
Specificity	Detects human TPT1/TCTP in direct ELISAs and Western blots. In direct ELISAs, approximately 50% cross-reactivity with recombinant mouse TPT1 is observed.
Source	Polyclonal Goat IgG
Purification	Antigen Affinity-purified
Immunogen	<i>E. coli</i> -derived recombinant human TPT1/TCTP Met1-Cys172 Accession # P13693
Formulation	Lyophilized from a 0.2 µm filtered solution in PBS with Trehalose. See Certificate of Analysis for details. *Small pack size (-SP) is supplied as a 0.2 µm filtered solution in PBS.

APPLICATIONS

Please Note: Optimal dilutions should be determined by each laboratory for each application. *General Protocols* are available in the *Technical Information* section on our website.

	Recommended Concentration	Sample
Western Blot	1 µg/mL	See Below

DATA



PREPARATION AND STORAGE

Reconstitution	Reconstitute at 0.2 mg/mL in sterile PBS.
Shipping	The product is shipped at ambient temperature. Upon receipt, store it immediately at the temperature recommended below. *Small pack size (-SP) is shipped with polar packs. Upon receipt, store it immediately at -20 to -70 °C
Stability & Storage	Use a manual defrost freezer and avoid repeated freeze-thaw cycles. <ul style="list-style-type: none"> ● 12 months from date of receipt, -20 to -70 °C as supplied. ● 1 month, 2 to 8 °C under sterile conditions after reconstitution. ● 6 months, -20 to -70 °C under sterile conditions after reconstitution.

BACKGROUND

TPT-1 (translationally controlled tumor protein 1; also TCTP, HRF and fortilin) is a 22-23 kDa member of the TCTP family of calcium-binding proteins. It is widely expressed (but not in kidney), and apparently serves as a transcriptional activator (Oct4), calcium transporter, histamine inducer and antiapoptotic, caspase-3 inhibitor. Human TPT-1 is 172 amino acids (aa) in length. It contains little in the way of structural motifs. There are multiple potential splice variants. There is an alternate start site at Met35 that may be accompanied by a deletion of aa 99-172. In addition, there may be either a 25 aa or 16 aa C-terminal extension after Cys172. Over aa 1-172, human TPT-1 is 96% aa identical to mouse TPT-1.