

DESCRIPTION

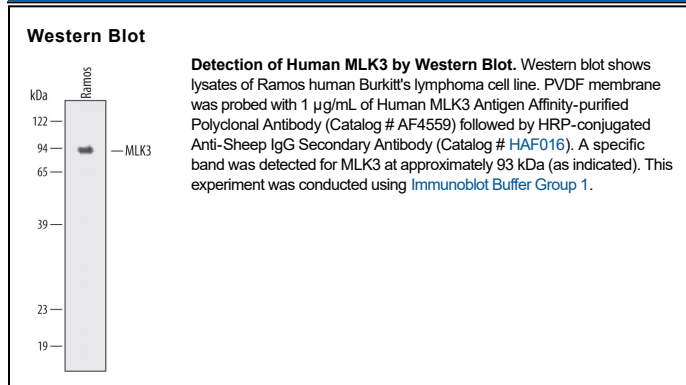
Species Reactivity	Human
Specificity	Detects endogenous human MLK3 in Western blots.
Source	Polyclonal Sheep IgG
Purification	Antigen Affinity-purified
Immunogen	<i>E. coli</i> -derived recombinant human MLK3 Ala85-Gly207 Accession # Q16584
Formulation	Lyophilized from a 0.2 µm filtered solution in PBS with Trehalose. See Certificate of Analysis for details. *Small pack size (-SP) is supplied either lyophilized or as a 0.2 µm filtered solution in PBS.

APPLICATIONS

Please Note: Optimal dilutions should be determined by each laboratory for each application. *General Protocols* are available in the *Technical Information* section on our website.

	Recommended Concentration	Sample
Western Blot	1 µg/mL	See Below

DATA



PREPARATION AND STORAGE

Reconstitution	Reconstitute at 0.2 mg/mL in sterile PBS.
Shipping	The product is shipped at ambient temperature. Upon receipt, store it immediately at the temperature recommended below. *Small pack size (-SP) is shipped with polar packs. Upon receipt, store it immediately at -20 to -70 °C
Stability & Storage	Use a manual defrost freezer and avoid repeated freeze-thaw cycles. <ul style="list-style-type: none"> ● 12 months from date of receipt, -20 to -70 °C as supplied. ● 1 month, 2 to 8 °C under sterile conditions after reconstitution. ● 6 months, -20 to -70 °C under sterile conditions after reconstitution.

BACKGROUND

Mixed-lineage kinases (MLKs) function as mitogen-activated protein kinase kinase kinases (MAP3Ks), activating the MAPK signaling cascades. MLK3, also known as MAP3K11 and PTK1, encodes a protein of 847 amino acids (aa) that shares an unusual leucine zipper-basic motif found in other MLKs. Small interfering RNA experiments have indicated that MLK3 is required for both mitogen and cytokine activation of JNK1, p38α, and ERK1.