

## DESCRIPTION

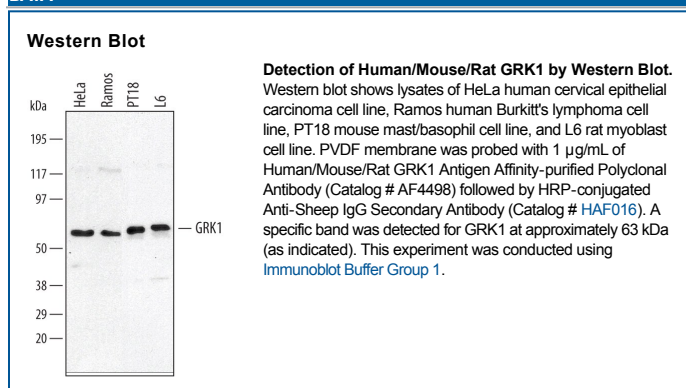
<b>Species Reactivity</b>	Human/Mouse/Rat
<b>Specificity</b>	Detects endogenous human, mouse, and rat GRK1 in Western blots.
<b>Source</b>	Polyclonal Sheep IgG
<b>Purification</b>	Antigen Affinity-purified
<b>Immunogen</b>	<i>E. coli</i> -derived recombinant human GRK1 Leu343-Ser563 Accession # Q15835
<b>Formulation</b>	Lyophilized from a 0.2 µm filtered solution in PBS with Trehalose. See Certificate of Analysis for details. *Small pack size (-SP) is supplied as a 0.2 µm filtered solution in PBS.

## APPLICATIONS

**Please Note:** Optimal dilutions should be determined by each laboratory for each application. *General Protocols* are available in the *Technical Information* section on our website.

	<b>Recommended Concentration</b>	<b>Sample</b>
<b>Western Blot</b>	1 µg/mL	See Below

## DATA



## PREPARATION AND STORAGE

<b>Reconstitution</b>	Reconstitute at 0.2 mg/mL in sterile PBS.
<b>Shipping</b>	The product is shipped at ambient temperature. Upon receipt, store it immediately at the temperature recommended below. *Small pack size (-SP) is shipped with polar packs. Upon receipt, store it immediately at -20 to -70 °C
<b>Stability &amp; Storage</b>	<b>Use a manual defrost freezer and avoid repeated freeze-thaw cycles.</b> <ul style="list-style-type: none"> <li>● 12 months from date of receipt, -20 to -70 °C as supplied.</li> <li>● 1 month, 2 to 8 °C under sterile conditions after reconstitution.</li> <li>● 6 months, -20 to -70 °C under sterile conditions after reconstitution.</li> </ul>

## BACKGROUND

G protein-coupled receptor kinases (GRKs) are important modulators of G protein-coupled receptor (GPCR) signaling. Receptor phosphorylation by specific GRKs plays a key role in triggering rapid desensitization. The GRK family consists of 7 isoforms that share a central catalytic domain with homology to other serine/threonine kinases. The catalytic domain is flanked by an amino-terminal RGS domain of 183-188 amino acids and a carboxyl-terminus of variable length. GRK1 and GRK7 are members of the rhodopsin kinase or visual GRK subfamily.