

DESCRIPTION

Species Reactivity	Human
Specificity	Detects human NETO1 in direct ELISAs and Western blots. In direct ELISAs and Western blots, approximately 10% cross-reactivity with recombinant human NETO2 is observed.
Source	Polyclonal Sheep IgG
Purification	Antigen Affinity-purified
Immunogen	Chinese hamster ovary cell line CHO-derived recombinant human NETO1 Thr23-Val345 Accession # Q8TDF5
Formulation	Lyophilized from a 0.2 µm filtered solution in PBS with Trehalose. See Certificate of Analysis for details. *Small pack size (-SP) is supplied either lyophilized or as a 0.2 µm filtered solution in PBS.

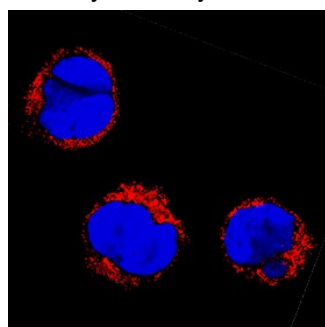
APPLICATIONS

Please Note: Optimal dilutions should be determined by each laboratory for each application. *General Protocols* are available in the *Technical Information* section on our website.

	Recommended Concentration	Sample
Western Blot	0.1 µg/mL	Recombinant Human NETO1
Immunocytochemistry	5-15 µg/mL	See Below
Immunohistochemistry	5-15 µg/mL	See Below

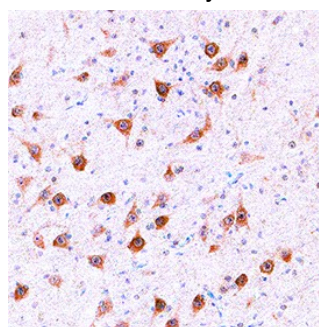
DATA

Immunocytochemistry



NETO1 in MOLT-4 Human Cell Line.
NETO1 was detected in immersion fixed MOLT-4 human acute lymphoblastic leukemia cell line using Sheep Anti-Human NETO1 Antigen Affinity-purified Polyclonal Antibody (Catalog # AF4337) at 5 µg/mL for 3 hours at room temperature. Cells were stained using the NorthernLights™ 557-conjugated Anti-Sheep IgG Secondary Antibody (red; Catalog # NL010) and counterstained with DAPI (blue). Specific staining was localized to cytoplasm. View our protocol for [Fluorescent ICC Staining of Non-adherent Cells](#).

Immunohistochemistry



NETO1 in Human Prostate. NETO1 was detected in immersion fixed paraffin-embedded sections of human prostate using Sheep Anti-Human NETO1 Antigen Affinity-purified Polyclonal Antibody (Catalog # AF4337) at 15 µg/mL overnight at 4 °C. Tissue was stained using the Anti-Sheep HRP-DAB Cell & Tissue Staining Kit (brown; Catalog # CTS019) and counterstained with hematoxylin (blue). Specific staining was localized to neuronal cell bodies. View our protocol for [Chromogenic IHC Staining of Paraffin-embedded Tissue Sections](#).

PREPARATION AND STORAGE

Reconstitution	Reconstitute at 0.2 mg/mL in sterile PBS.
Shipping	The product is shipped at ambient temperature. Upon receipt, store it immediately at the temperature recommended below. *Small pack size (-SP) is shipped with polar packs. Upon receipt, store it immediately at -20 to -70 °C
Stability & Storage	Use a manual defrost freezer and avoid repeated freeze-thaw cycles. <ul style="list-style-type: none"> ● 12 months from date of receipt, -20 to -70 °C as supplied. ● 1 month, 2 to 8 °C under sterile conditions after reconstitution. ● 6 months, -20 to -70 °C under sterile conditions after reconstitution.

BACKGROUND

Neuropilin and tollid-like protein 1 (NETO1), also known as Brain-specific transmembrane protein containing 2 CUB and 1 LDL-receptor class A domains protein 1 (BTCL1), is a type I transmembrane protein that is expressed in the brain and retina. The 511 amino acid residue mature human NETO1 contains an extracellular domain with two CUB domains (aa 41-155 and 172-287), and one class A LDL-receptor segment (aa 292-326). Three human NETO1 splice isoforms exist, including a secreted soluble variant that shows an Asp-to-Glu transition at residue 157 followed by a premature truncation. Over aa 23-345, human NETO1 shares 97% and 98% aa identity with mouse and canine NETO1, respectively.