

DESCRIPTION

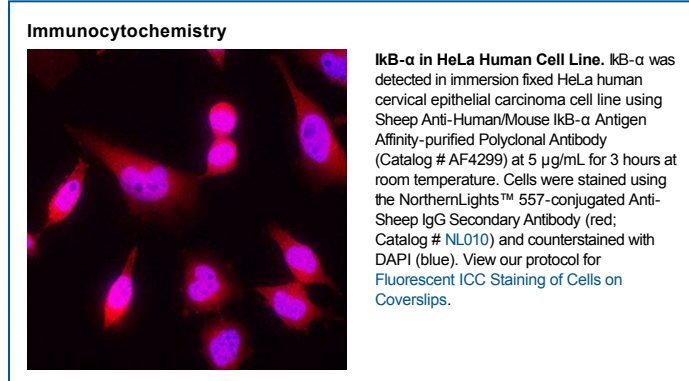
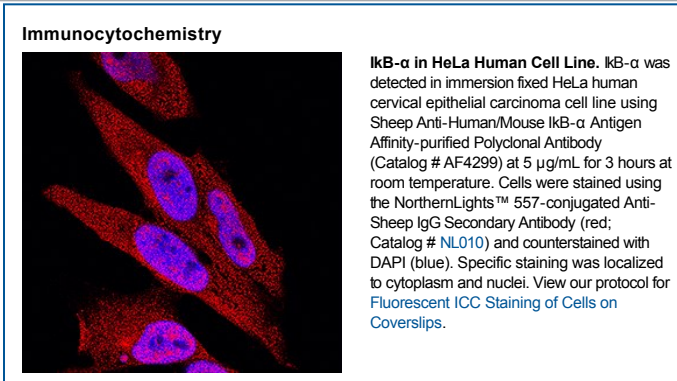
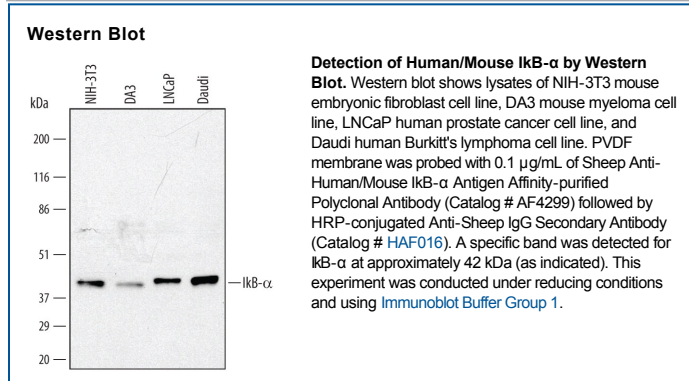
Species Reactivity	Human/Mouse
Specificity	Detects human and mouse IκB-α in Western blots.
Source	Polyclonal Sheep IgG
Purification	Antigen Affinity-purified
Immunogen	<i>E. coli</i> -derived recombinant mouse IκB-α Met1-Leu314 Accession # Q9Z1E3
Formulation	Lyophilized from a 0.2 μm filtered solution in PBS with Trehalose. See Certificate of Analysis for details. *Small pack size (-SP) is supplied as a 0.2 μm filtered solution in PBS.

APPLICATIONS

Please Note: Optimal dilutions should be determined by each laboratory for each application. *General Protocols* are available in the *Technical Information* section on our website.

	Recommended Concentration	Sample
Western Blot	0.1 μg/mL	See Below
Immunocytochemistry	5-15 μg/mL	See Below

DATA



PREPARATION AND STORAGE

Reconstitution	Reconstitute at 0.2 mg/mL in sterile PBS.
Shipping	The product is shipped at ambient temperature. Upon receipt, store it immediately at the temperature recommended below. *Small pack size (-SP) is shipped with polar packs. Upon receipt, store it immediately at -20 to -70 °C
Stability & Storage	Use a manual defrost freezer and avoid repeated freeze-thaw cycles. <ul style="list-style-type: none"> • 12 months from date of receipt, -20 to -70 °C as supplied. • 1 month, 2 to 8 °C under sterile conditions after reconstitution. • 6 months, -20 to -70 °C under sterile conditions after reconstitution.

BACKGROUND

NFκB inhibitor alpha (IκB-α) inhibits the NFκB complex by binding and sequestering it in the cytoplasm. Upon stimulation, IκB-α is phosphorylated on serine residues marking it for degradation by the ubiquitin pathway. Following IκB-α degradation, the NFκB complex is able to translocate to the nucleus and activate transcription.