

DESCRIPTION

Species Reactivity	Human
Specificity	Detects human Intelectin-1 in direct ELISAs and Western blots.
Source	Polyclonal Sheep IgG
Purification	Antigen Affinity-purified
Immunogen	<i>E. coli</i> -derived recombinant human Intelectin-1/Omentin Thr19-Ser298 Accession # Q8WWA0
Formulation	Lyophilized from a 0.2 µm filtered solution in PBS with Trehalose. See Certificate of Analysis for details. *Small pack size (-SP) is supplied either lyophilized or as a 0.2 µm filtered solution in PBS.

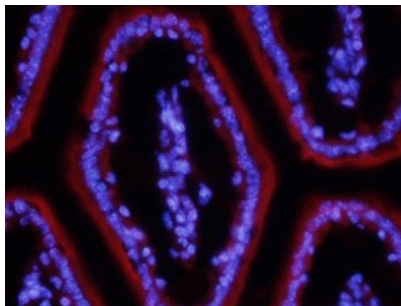
APPLICATIONS

Please Note: Optimal dilutions should be determined by each laboratory for each application. *General Protocols* are available in the *Technical Information* section on our website.

	Recommended Concentration	Sample
Western Blot	0.1 µg/mL	Recombinant Human Intelectin-1/Omentin
Immunocytochemistry	5-15 µg/mL	See Below
Immunohistochemistry	5-15 µg/mL	See Below

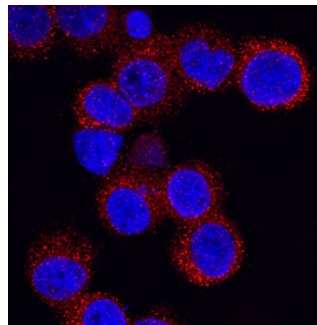
DATA

Immunohistochemistry



Intelectin-1/Omentin in Mouse Intestine. Intelectin-1/Omentin was detected in immersion fixed frozen sections of mouse intestine using 10 µg/mL Sheep Anti-Human Intelectin-1/Omentin Antigen Affinity-purified Polyclonal Antibody (Catalog # AF4254) overnight at 4 °C. Tissue was stained with the NorthernLights™ 557-conjugated Anti-Sheep IgG Secondary Antibody (red; Catalog # NL010) and counterstained with DAPI (blue). View our protocol for [Fluorescent IHC Staining of Frozen Tissue Sections](#).

Immunocytochemistry



Intelectin-1/Omentin in U937 Human Cell Line. Intelectin-1/Omentin was detected in immersion fixed U937 human histiocytic lymphoma cell line using Sheep Anti-Human Intelectin-1/Omentin Antigen Affinity-purified Polyclonal Antibody (Catalog # AF4254) at 5 µg/mL for 3 hours at room temperature. Cells were stained using the NorthernLights™ 557-conjugated Anti-Sheep IgG Secondary Antibody (red; Catalog # NL010) and counterstained with DAPI (blue). Specific staining was localized to cytoplasm. View our protocol for [Fluorescent ICC Staining of Cells on Coverslips](#).

PREPARATION AND STORAGE

Reconstitution	Reconstitute at 0.2 mg/mL in sterile PBS.
Shipping	The product is shipped at ambient temperature. Upon receipt, store it immediately at the temperature recommended below. *Small pack size (-SP) is shipped with polar packs. Upon receipt, store it immediately at -20 to -70 °C
Stability & Storage	Use a manual defrost freezer and avoid repeated freeze-thaw cycles. <ul style="list-style-type: none"> • 12 months from date of receipt, -20 to -70 °C as supplied. • 1 month, 2 to 8 °C under sterile conditions after reconstitution. • 6 months, -20 to -70 °C under sterile conditions after reconstitution.

BACKGROUND

Intelectin-1 (intestinal lectin; also ITLN-1 and omentin) is a 40 kDa Ca-dependent galactofuranose-binding lectin that is not a C-type lectin. It is expressed on multiple cell types and appears to participate in insulin signaling and microbe recognition. The human ITLN-1 preproprecursor is 313 amino acids (aa) in length. It contains an 18 aa signal sequence, a 280 aa mature segment (aa 19-298), and a 15 aa C-terminal proregion that is cleaved to generate a GPI-linkage. One fibrinogen-related domain exists in the mature molecule (aa 36-209). Human ITLN-1 exists as a disulfide-linked glycosylated homotrimer. Mouse ITLN-1 is unglycosylated and a monomer. Mature human ITLN-1 is 82% aa identical to mouse ITLN-1. Human ITLN-1 shows one alternate start site at Met72, and a splice form that contains a 32 aa substitution for aa 264-313.