

#### DESCRIPTION

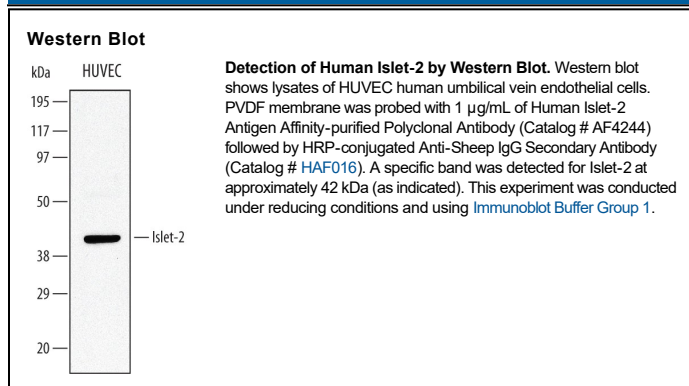
<b>Species Reactivity</b>	Human
<b>Specificity</b>	Detects human Islet-2 in direct ELISAs and Western blots.
<b>Source</b>	Polyclonal Sheep IgG
<b>Purification</b>	Antigen Affinity-purified
<b>Immunogen</b>	<i>E. coli</i> -derived recombinant human Islet-2 Met1-Thr359 Accession # Q96A47
<b>Formulation</b>	Lyophilized from a 0.2 µm filtered solution in PBS with Trehalose. See Certificate of Analysis for details. *Small pack size (-SP) is supplied either lyophilized or as a 0.2 µm filtered solution in PBS.

#### APPLICATIONS

**Please Note:** Optimal dilutions should be determined by each laboratory for each application. [General Protocols](#) are available in the Technical Information section on our website.

	<b>Recommended Concentration</b>	<b>Sample</b>
<b>Western Blot</b>	1 µg/mL	See Below
<b>Immunohistochemistry</b>	5-15 µg/mL	Immersion fixed frozen sections of mouse embryo (E13.5)

#### DATA



#### PREPARATION AND STORAGE

<b>Reconstitution</b>	Reconstitute at 0.2 mg/mL in sterile PBS.
<b>Shipping</b>	The product is shipped at ambient temperature. Upon receipt, store it immediately at the temperature recommended below. *Small pack size (-SP) is shipped with polar packs. Upon receipt, store it immediately at -20 to -70 °C
<b>Stability &amp; Storage</b>	<b>Use a manual defrost freezer and avoid repeated freeze-thaw cycles.</b> <ul style="list-style-type: none"> <li>12 months from date of receipt, -20 to -70 °C as supplied.</li> <li>1 month, 2 to 8 °C under sterile conditions after reconstitution.</li> <li>6 months, -20 to -70 °C under sterile conditions after reconstitution.</li> </ul>

#### BACKGROUND

Islet-2 is a member of the LIM homeodomain transcription factors and its expression pattern defines a subclass of motor neurons. Islet-2 contains two amino terminal LIM domains and a carboxy terminal homeodomain. Human Islet-2 shares 93% similarity with mouse Islet-2.