

DESCRIPTION

Species Reactivity	Mouse
Specificity	Detects mouse SorCS2 in direct ELISAs and Western blots. In direct ELISAs, approximately 10% cross-reactivity with recombinant human (rh) SorCS2 and less than 5% cross-reactivity with rhSorCS1 and recombinant mouse SorCS1 is observed.
Source	Polyclonal Sheep IgG
Purification	Antigen Affinity-purified
Immunogen	Mouse myeloma cell line NS0-derived recombinant mouse SorCS2 Ala118-Gly1078 Accession # Q9EPR5
Formulation	Lyophilized from a 0.2 µm filtered solution in PBS with Trehalose. See Certificate of Analysis for details. *Small pack size (-SP) is supplied as a 0.2 µm filtered solution in PBS.

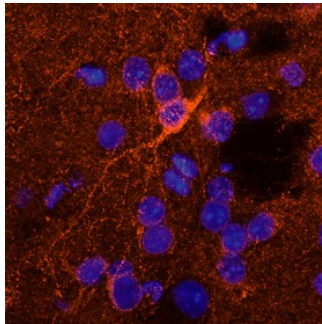
APPLICATIONS

Please Note: Optimal dilutions should be determined by each laboratory for each application. *General Protocols* are available in the *Technical Information* section on our website.

	Recommended Concentration	Sample
Western Blot	0.1 µg/mL	Recombinant Mouse SorCS2 (Catalog # 4237-SR)
Immunohistochemistry	5-15 µg/mL	See Below

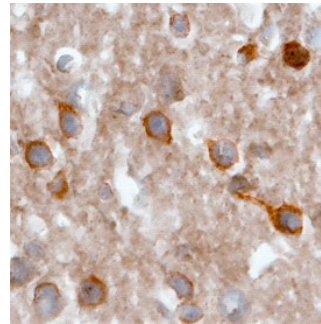
DATA

Immunohistochemistry



SorCS2 in Mouse Brain. SorCS2 was detected in perfusion fixed frozen sections of mouse brain using Sheep Anti-Mouse SorCS2 Antigen Affinity-purified Polyclonal Antibody (Catalog # AF4237) at 15 µg/mL overnight at 4 °C. Tissue was stained using the NorthernLights™ 557-conjugated Anti-Sheep IgG Secondary Antibody (red; Catalog # NL010) and counterstained with DAPI (blue). View our protocol for [Fluorescent IHC Staining of Frozen Tissue Sections](#).

Immunohistochemistry



SorCS2 in Mouse Brain. SorCS2 was detected in perfusion fixed frozen sections of mouse brain using Sheep Anti-Mouse SorCS2 Antigen Affinity-purified Polyclonal Antibody (Catalog # AF4237) at 15 µg/mL overnight at 4 °C. Tissue was stained using the Anti-Sheep HRP-DAB Cell & Tissue Staining Kit (brown; Catalog # CTS019) and counterstained with hematoxylin (blue). View our protocol for [Chromogenic IHC Staining of Frozen Tissue Sections](#).

PREPARATION AND STORAGE

Reconstitution	Reconstitute at 0.2 mg/mL in sterile PBS.
Shipping	The product is shipped at ambient temperature. Upon receipt, store it immediately at the temperature recommended below. *Small pack size (-SP) is shipped with polar packs. Upon receipt, store it immediately at -20 to -70 °C
Stability & Storage	Use a manual defrost freezer and avoid repeated freeze-thaw cycles. <ul style="list-style-type: none"> ● 12 months from date of receipt, -20 to -70 °C as supplied. ● 1 month, 2 to 8 °C under sterile conditions after reconstitution. ● 6 months, -20 to -70 °C under sterile conditions after reconstitution.

BACKGROUND

Mouse SorCS2 is a 110-130 kDa member of the Vps10p (vacuolar protein sorting 10 protein)-D family of sorting receptors. It is synthesized as a 1159 amino acid (aa) preproprecursor that undergoes proteolytic processing to generate a 1042 aa mature type I transmembrane receptor. The extracellular domain shows an imperfect LRR and a Vps10p domain. SorCS2 is plasma membrane expressed and may undergo proteolytic cleavage. Over aa 118-1078, mouse SorCS2 is 88% and 98% aa identical to human and rat SorCS2, respectively.