

#### DESCRIPTION

<b>Species Reactivity</b>	Human
<b>Specificity</b>	Detects human Mxi1 in direct ELISAs. In direct ELISAs, less than 1% cross-reactivity with recombinant human (rh) MAD1, rhMAD3, and rhMAD4 is observed.
<b>Source</b>	Polyclonal Goat IgG
<b>Purification</b>	Antigen Affinity-purified
<b>Immunogen</b>	<i>E. coli</i> -derived recombinant human Mxi1 Ala81-Ser228 Accession # P50539
<b>Formulation</b>	Lyophilized from a 0.2 µm filtered solution in PBS with Trehalose. See Certificate of Analysis for details. *Small pack size (-SP) is supplied as a 0.2 µm filtered solution in PBS.

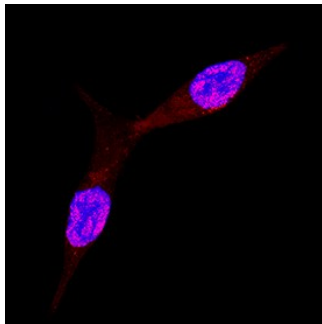
#### APPLICATIONS

**Please Note:** Optimal dilutions should be determined by each laboratory for each application. *General Protocols* are available in the *Technical Information* section on our website.

	<b>Recommended Concentration</b>	<b>Sample</b>
<b>Immunocytochemistry</b>	5-15 µg/mL	See Below

#### DATA

##### Immunocytochemistry



**Mxi1 in LNCaP Human Cell Line.** Mxi1 was detected in immersion fixed LNCaP human prostate cancer cell line using Goat Anti-Human Mxi1 Antigen Affinity-purified Polyclonal Antibody (Catalog # AF4185) at 15 µg/mL for 3 hours at room temperature. Cells were stained using the NorthernLights™ 557-conjugated Anti-Goat IgG Secondary Antibody (red; Catalog # NL001) and counterstained with DAPI (blue). Specific staining was localized to nuclei. View our protocol for [Fluorescent ICC Staining of Cells on Coverslips](#).

#### PREPARATION AND STORAGE

<b>Reconstitution</b>	Reconstitute at 0.2 mg/mL in sterile PBS.
<b>Shipping</b>	The product is shipped at ambient temperature. Upon receipt, store it immediately at the temperature recommended below. *Small pack size (-SP) is shipped with polar packs. Upon receipt, store it immediately at -20 to -70 °C
<b>Stability &amp; Storage</b>	<b>Use a manual defrost freezer and avoid repeated freeze-thaw cycles.</b> <ul style="list-style-type: none"> <li>● 12 months from date of receipt, -20 to -70 °C as supplied.</li> <li>● 1 month, 2 to 8 °C under sterile conditions after reconstitution.</li> <li>● 6 months, -20 to -70 °C under sterile conditions after reconstitution.</li> </ul>

#### BACKGROUND

Mxi-1 (Max interactor 1) is a 26 kDa member of the bHLH-leucine zipper family, Myc superfamily of transcription factors. It is a widely expressed transcriptional repressor that heterodimerizes with Max and blocks Max-Myc gene activation. Human Mxi-1 is 228 amino acids (aa) in length. It contains a DNA binding motif (aa 69-80) and a bHLH domain (aa 81-120). Multiple splice variants of Mxi-1 appear to exist. They may incorporate an alternate start site at Met37, a 92 aa substitution for the first 26 N-terminal amino acids, or a deletion of the C-terminal 59 or 74 amino acids. Over aa 81-228, human Mxi-1 is 95% aa identical to mouse Mxi-1.