

DESCRIPTION

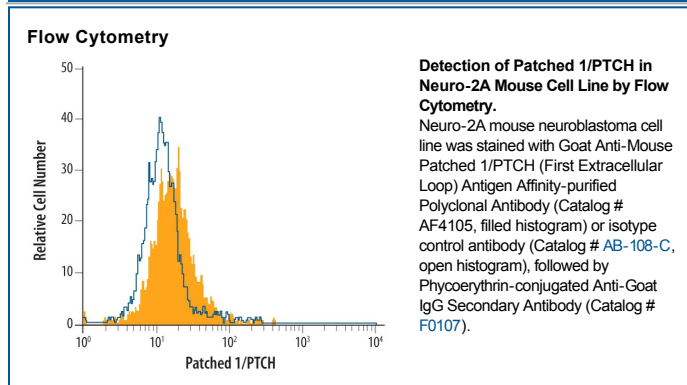
Species Reactivity	Mouse
Specificity	Detects mouse Patched 1/PTCH in direct ELISAs and Western blots. In direct ELISAs, approximately 50% cross-reactivity with recombinant human Patched 1 is observed, and less than 5% cross-reactivity with recombinant mouse Patched-2 is observed.
Source	Polyclonal Goat IgG
Purification	Antigen Affinity-purified
Immunogen	<i>E. coli</i> -derived recombinant mouse Patched 1/PTCH Glu108-Asp422 Accession # Q61115
Formulation	Lyophilized from a 0.2 µm filtered solution in PBS with Trehalose. See Certificate of Analysis for details. *Small pack size (-SP) is supplied either lyophilized or as a 0.2 µm filtered solution in PBS.

APPLICATIONS

Please Note: Optimal dilutions should be determined by each laboratory for each application. *General Protocols* are available in the *Technical Information* section on our website.

	Recommended Concentration	Sample
Western Blot	0.1 µg/mL	Recombinant Mouse Patched (First Extracellular Loop)
Flow Cytometry	2.5 µg/10 ⁶ cells	See Below
CyTOF-ready	Ready to be labeled using established conjugation methods. No BSA or other carrier proteins that could interfere with conjugation.	

DATA



PREPARATION AND STORAGE

Reconstitution	Reconstitute at 0.2 mg/mL in sterile PBS.
Shipping	The product is shipped at ambient temperature. Upon receipt, store it immediately at the temperature recommended below. *Small pack size (-SP) is shipped with polar packs. Upon receipt, store it immediately at -20 to -70 °C
Stability & Storage	Use a manual defrost freezer and avoid repeated freeze-thaw cycles. <ul style="list-style-type: none"> ● 12 months from date of receipt, -20 to -70 °C as supplied. ● 1 month, 2 to 8 °C under sterile conditions after reconstitution. ● 6 months, -20 to -70 °C under sterile conditions after reconstitution.

BACKGROUND

Patched (Ptch1) is a 170-175 kDa protein that functions in Hedgehog signaling. It is found on multiple cell types and forms a constitutive, inactivating complex with Smoothened. Upon Hedgehog binding to Patched, Smoothened is released and initiates downstream signaling. Mouse Patched is a 12 transmembrane, 1434 amino acid (aa) glycoprotein that contains two terminal cytoplasmic domains. Only one mRNA species for Ptch1 has been reported in mice. However, two or more splice forms may exist, with variation occurring over the first 150 aa of the N-terminus. Mouse Patched shares 97% and 99% aa sequence identity with human and rat Patched, respectively.