

## DESCRIPTION

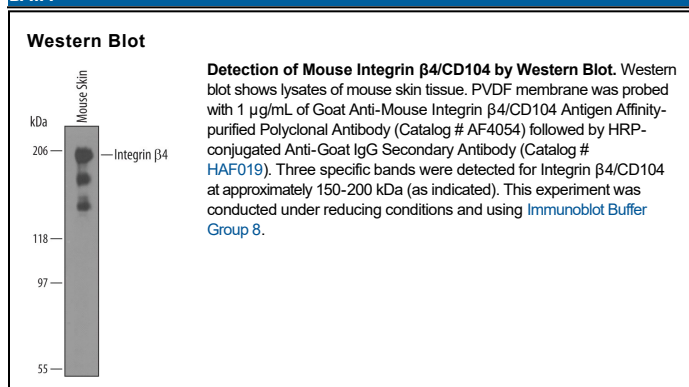
<b>Species Reactivity</b>	Mouse
<b>Specificity</b>	Detects mouse Integrin $\beta$ 4/CD104 in direct ELISAs and Western blots. In direct ELISAs, approximately 15% cross-reactivity with recombinant human Integrin $\beta$ 4 is observed.
<b>Source</b>	Polyclonal Goat IgG
<b>Purification</b>	Antigen Affinity-purified
<b>Immunogen</b>	Chinese hamster ovary cell line CHO-derived recombinant mouse Integrin $\beta$ 4/CD104 Asn29-Cys707 Accession # NP_001005608
<b>Formulation</b>	Lyophilized from a 0.2 $\mu$ m filtered solution in PBS with Trehalose. See Certificate of Analysis for details. *Small pack size (-SP) is supplied either lyophilized or as a 0.2 $\mu$ m filtered solution in PBS.

## APPLICATIONS

**Please Note:** Optimal dilutions should be determined by each laboratory for each application. [General Protocols](#) are available in the Technical Information section on our website.

	<b>Recommended Concentration</b>	<b>Sample</b>
<b>Western Blot</b>	1 $\mu$ g/mL	See Below

## DATA



## PREPARATION AND STORAGE

<b>Reconstitution</b>	Reconstitute at 0.2 mg/mL in sterile PBS.
<b>Shipping</b>	The product is shipped at ambient temperature. Upon receipt, store it immediately at the temperature recommended below. *Small pack size (-SP) is shipped with polar packs. Upon receipt, store it immediately at -20 to -70 °C
<b>Stability &amp; Storage</b>	<b>Use a manual defrost freezer and avoid repeated freeze-thaw cycles.</b> <ul style="list-style-type: none"> <li>12 months from date of receipt, -20 to -70 °C as supplied.</li> <li>1 month, 2 to 8 °C under sterile conditions after reconstitution.</li> <li>6 months, -20 to -70 °C under sterile conditions after reconstitution.</li> </ul>

## BACKGROUND

Integrin  $\beta$ 4 (also GP150 and CD104) is a 150-180 kDa member of the integrin beta family of molecules. It is found on keratinocytes, Schwann cells and perineural fibroblasts, and participates in the formation of epithelial hemidesmosomes by forming noncovalent heterodimers with Integrin  $\alpha$ 6. Mature mouse Integrin  $\beta$ 4 is a type I transmembrane glycoprotein that is 1774 amino acids (aa) in length. It contains a 683 aa extracellular domain (aa 29-711) and a large 1068 aa cytoplasmic region. Three variant splice forms may exist. One shows a GlyGluHis insertion after Leu1103, a second shows a deletion of aa 1447-1499, and a third shows the same deletion accompanied by an insertion of 65 aa after Thr1367. Over aa 29-711, mouse  $\beta$ 4 shares 88% and 96% aa identity with human and rat  $\beta$ 4, respectively.